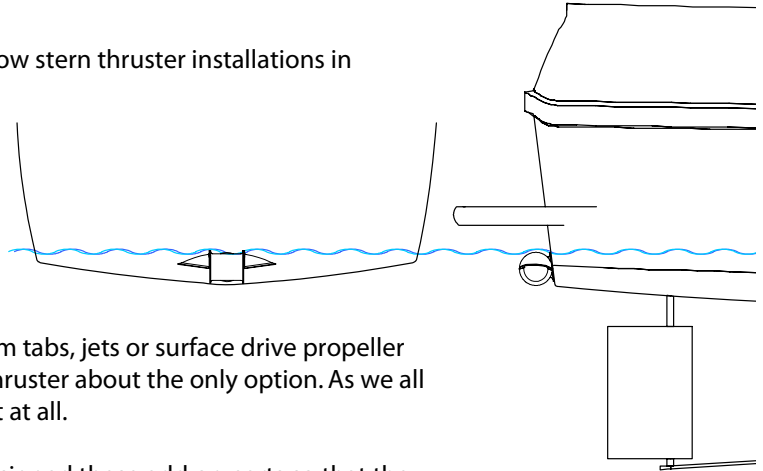


Stern thrusters available for more boats !

We are proud to introduce a new product, that will allow stern thruster installations in boats with shallow draft or other obstructions on the stern.

Among the more popular boats for sternthrusters are the trawler style yachts which often are single engined and also often have a very shallow stern, this making it very difficult to fit a sterntunnel deep enough to work properly. Other boats might have other obstructions such as trim tabs, jets or surface drive propeller systems making a very shallow installation of a sternthruster about the only option. As we all know, if the thruster sucks air, there is almost no thrust at all.

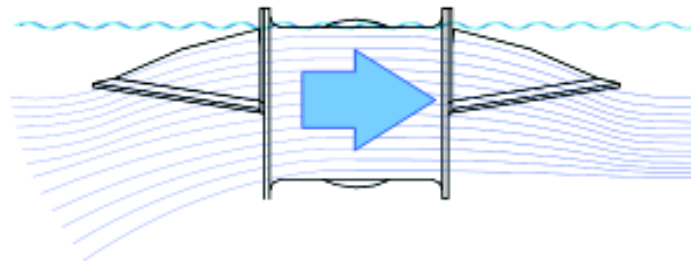


To allow these boats to get sternthrusters we have designed these add on parts so that the sterntunnel can be fitted at the waterline while still working very well. These "cowls" as we call them, are very easy to fit - just bolt-on to the standard sterntunnels. They can even be used to partly re-direct the water stream backwards from the sternthruster at other depths to avoid obstructing parts on the boats stern.

Available models:

Short model:

The short model is made for maximum deflection in a small space, but due to the water being forced to turn rather sharply, it will reduce the performance from the optimum (optimum being a standard sternthruster fitted at full depth) by approx. 15-20%.



Long model:

The long model is made for maximum thrust while still allowing a shallow installation, it will only reduce the thrust by approx. 5-10% compared to a perfect sternthruster installation without any cowls.

Composite:

All models will be transitioning to an epoxy material in 2014 to increase durability.

Advantages with the composite cowls are more cost efficient materials and manufacturing methods, thereby giving reduced prices.

Available models are:

#code Description

- 90126 Cowls for \varnothing 125mm sterntunnel (SE30/40) long model, kit of two
- 90080 Cowls for \varnothing 185mm sterntunnel (SE60/80/100, SH100) short model, kit of two
- 90077 Cowls for \varnothing 185mm sterntunnel (SE60/80/100, SH100) long model, kit of two
- 90136 Cowls for \varnothing 215mm sterntunnel (SE120/150, SH160) long model, kit of two
- 90130 Cowls for \varnothing 250mm sterntunnel (SE130/170/210, SH240) long model, kit of two
- 90220 Cowls for \varnothing 300mm sterntunnel (SP240/285, SP300HYD) long model, kit of two
- 90560 Cowls for \varnothing 386mm sterntunnel (SH420/550) long model, kit of two

Please see reverse page for measurements.

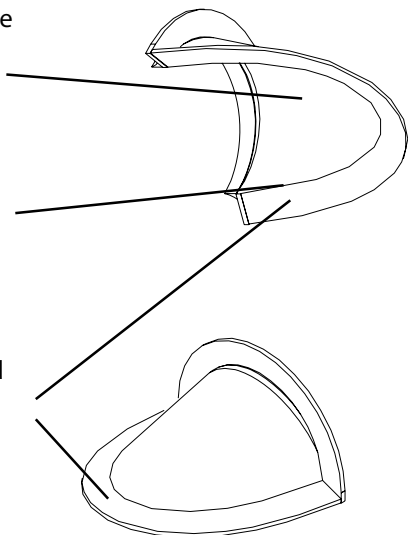


Technical description of Cowls for sterntunnels.

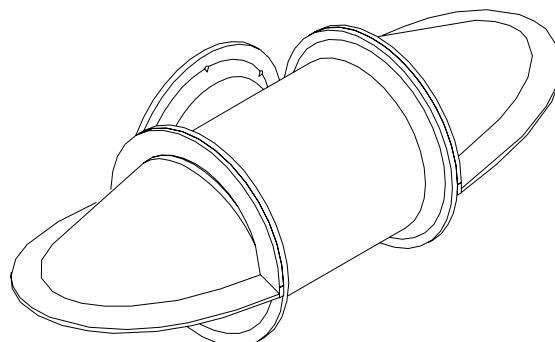
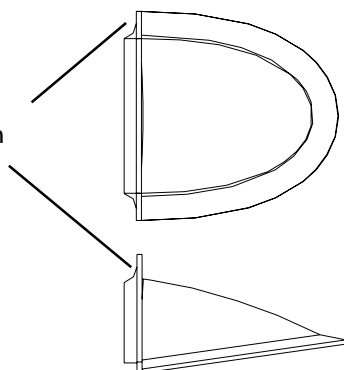
Sturdy and strong, made in Composite with smooth inside for best waterflow.

Radiused corners prevents turbulence .

An angled edge around opens up for best waterflow while further preventing air to get sucked down.



Perfect fit to "thrust" flange with matching radius for easy bolt-on fitting.

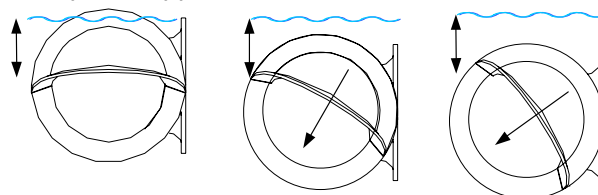


A standard Sidepower sternthruster tunnel with the add-on cowls for shallow installation.

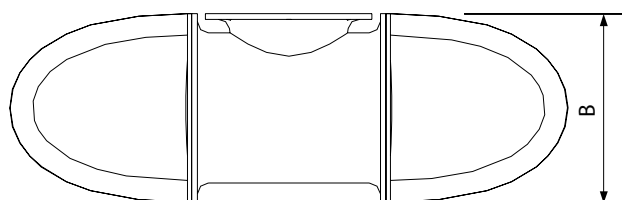
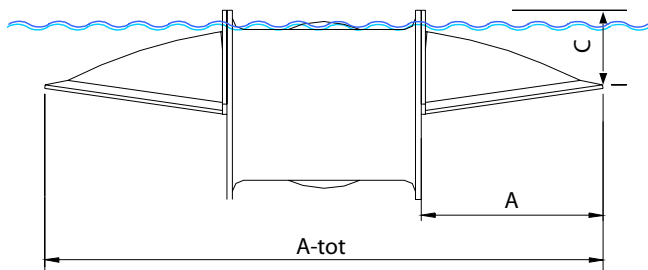
Using the cowls to change the waters direction to avoid obstructions on the stern.

The cowls can be bolted on in principally any angle on the sterntunnel to change the waters path if needed.

Examples of applications:



If you angle the cowls out of horizontal, remember that the tunnel needs to be fitted deeper to avoid air getting sucked in



MEASUREMENTS

Part#	90126	90080	90077	90136	90130	90220	90560
A-tot (mm/in)	528/20.8	681/26.8	823/32.4	850/33.5	1010/39.75	1208/47.6	1580/62.2
A (mm/in)	166/6.5	172/6.8	243/9.6	260/10.2	330/13.0	393/15.5	515/20.3
B (mm/in)	170/6.7	256/10.1	256/10.1	288/11.3	340/13.4	419/16.5	540/21.3
C (mm/in)				130/5.1			240/9.4