

SIDE-POWER
Thruster Systems

8977-12V/8977-24V S-Link Automatic main switch

Keep this
manual onboard !

Installation and user instructions

To be used in addition to the main thruster manual
v 1.0.1



IMPORTANT NOTICE:

This manual is to be used in addition to the regular installation manual for the Side-Power thruster.

This manual is intended for professionals only that can read and understand a wiring diagram, and does not contain all detailed work instructions for what must be done to ensure correct and safe installation



SLEIPNER MOTOR AS

P.O. Box 519

N-1612 Fredrikstad

Norway

Tel: +47 69 30 00 60

Fax: +47 69 30 00 70

www.side-power.com

sidepower@sleipner.no



Made in Norway

© Sleipner Motor AS 2011

Note! *To achieve maximum effect, reliability and durability from your Sidepower thruster, a correct installation as per the instructions are very important. Please follow the instructions carefully, and make sure that all checkpoints are carefully controlled.*

INTRODUCTION - DESCRIPTION OF FUNCTION:

The Sidepower automatic main switch product was developed to further enhance the safety and ease of use of a Sidepower thruster system. The automatic main switch ensures that there is no power at the thruster unless you actually intend to use the thruster. It is controlled by the Sidepower control panel / Sidepower control device, and also benefits from the Auto-Off features in these products so that if you forget to shut it off, it will automatically shut off after a preset time.

This also means that in case of a failure, the main switch is fast and easy to shut off without leaving the steering position simply by pushing the OFF on the control panel, which should be the logic thing to do even in a panic situation.

To comply with regulations the automatic main switch also has a mechanical shut-off feature on the main switch itself. This is a backup in case there is a failure in the switch.

The built-in fuse holder is made for ANL type fuses with special provisions to reduce voltage drop and heating. By the fuse being part of the unit, you avoid fitting two separate items to comply with having both a fuse and a main switch on the thruster main circuit.

INSTALLATION PLANNING AND PRECAUTIONS:

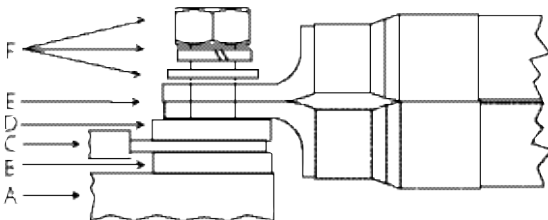
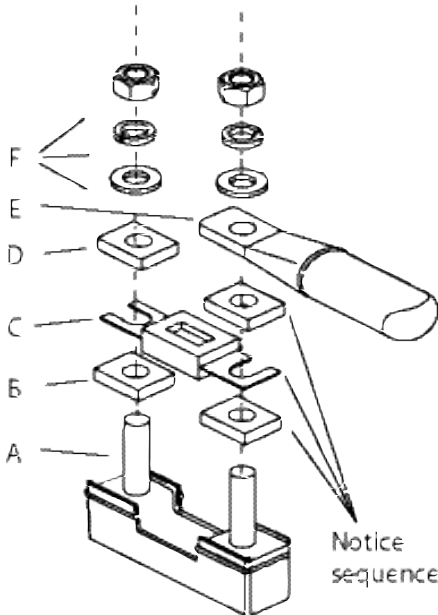
- The automatic main switch should be fitted as close to the battery(ies) as possible.
- Do not fit the automatic main switch with other than the appropriate original Sidepower S-link control panels or other S-link control devices specifically designed for this.
- It is designed to fit on a shelf or a wall and must be fitted so that it keeps dry at all times.
- The automatic main switch can NOT be fitted in spaces requiring Ignition protected equipment.
- Make sure that the fuse you order for the main switch is the correct one for the thruster it is being fitted with.
- S-Link cables must be connected to a S-Link network and routed to all S-Link devices
- If any of the Sidepower control panels are situated outside or in a place where they can be accessed when the boat is not in use, the control power for S-Link system should be taken over another main switch that will be off when the boat is not in use.
- Failure to install the automatic main switch in accordance with this manual will render all warranty void and can cause malfunction or even serious damages.

DO NOT connect any other control equipment to the S-link controlled products except Side-Power original S-link products or via a Side-Power supplied interface product made for interfacing with other controls. Any attempt to directly control or at all connect into the S-link control system without the designated and approved interface, will render all warranties and responsibilities for the complete line of Side-Power products connected void and null.

Installation of the Sidepower automatic main switch

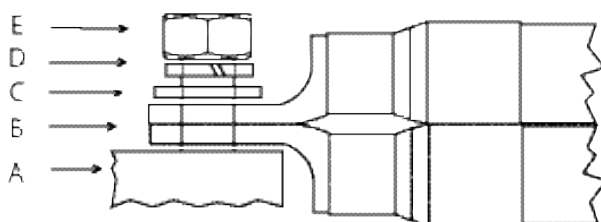
Fitting the fuse and battery cable(s).

- Remove the nuts and all the washers (B, D and F).
- Fit the fuse (C) on top of the pre-fitted conductors (A) and washer (B).
- Fit the washers (D) and battery cable(s) (E) as shown below.
- Fit the washers and nut(F).
- Tighten the nut carefully with 20Nm(14.5 lb/ft) torque, as the brass bolt is weaker than a steel bolt.



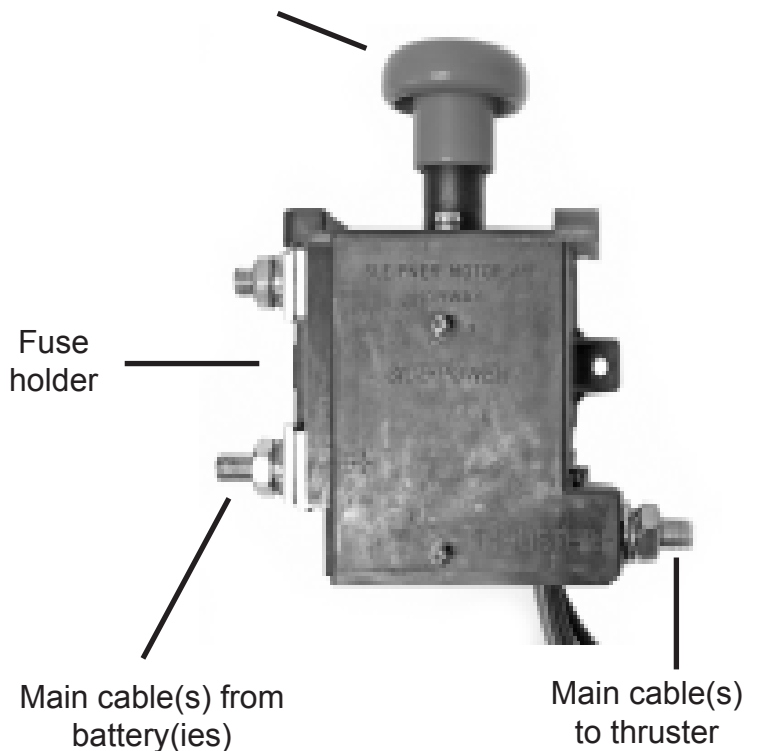
Fitting the thruster cable(s)

- Remove the nuts and washers (C, D and E).
- Fit the cable or cables (B) as shown directly onto the pre-fitted conductor (A).
- Fit the washers in sequence as shown with the flat washer (C) on top of the cable and the springwasher (D) under the nut (E).



Description of the automatic main switch

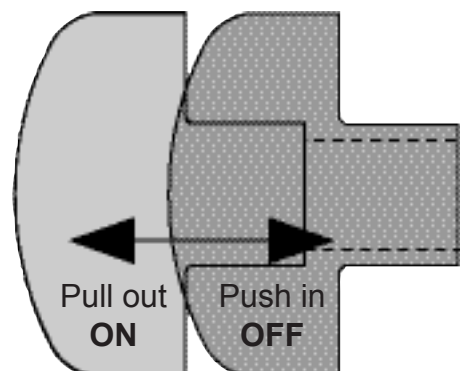
Manual over ride button.
Push to shut OFF
Pull to activate ON



NB: The main cables must be connected in this order for the system to function properly!

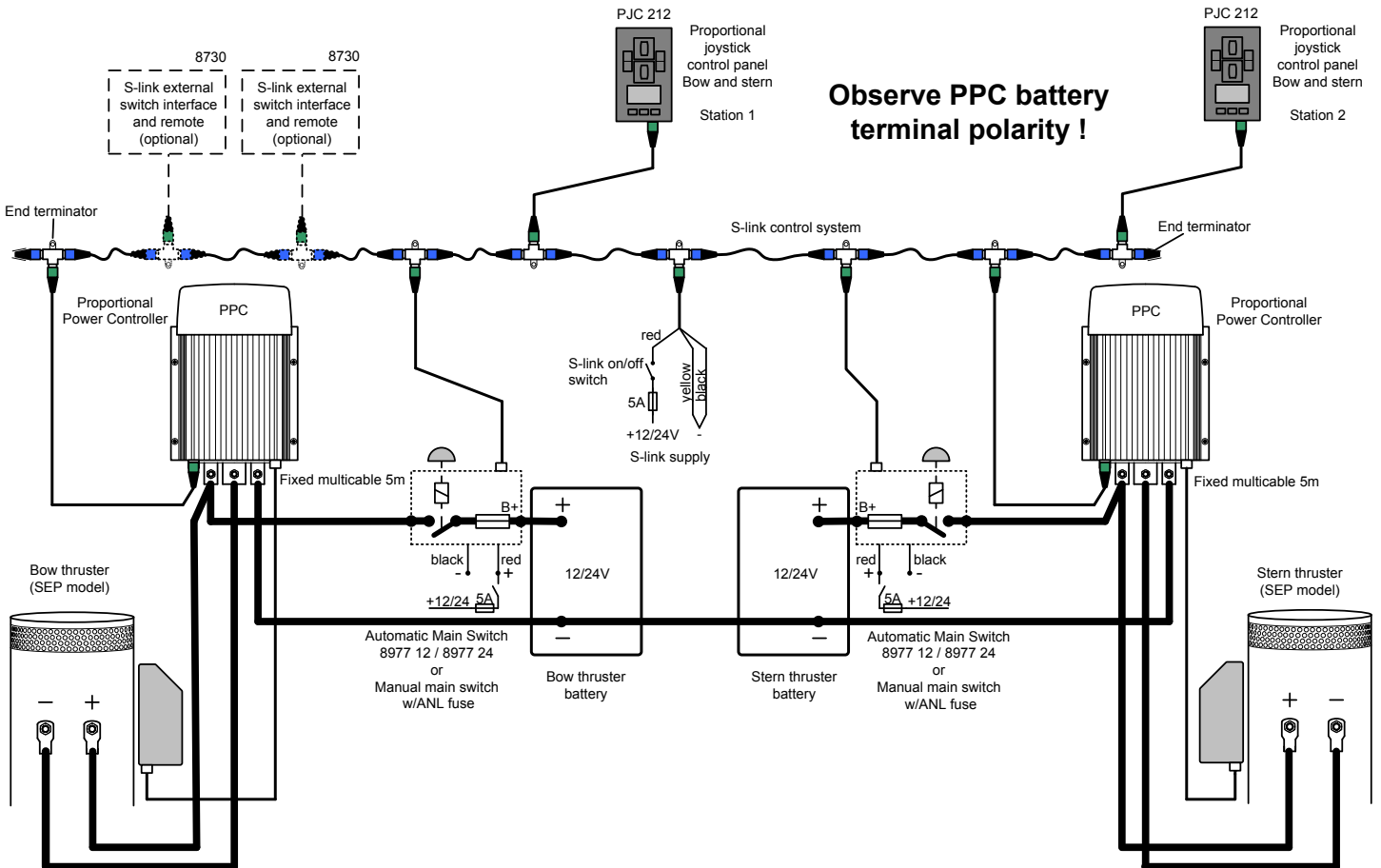
Manual override button.

- Pull OUT for ON
- Push IN for OFF
- Leave the switch in ON position when on board
- Make sure the switch is in OFF position when leaving the boat for a long period or when you are installing or servicing the thruster system



Wiring of the automatic main switch

- Fit the automatic mainswitch as close to the battery(ies) as possible making sure that it is in a position so that it will stay dry at all times.
- Use S-Link cables to connect to S-Link network
- Use the table in the thrusters manual for deciding the main cable sizes, the lengths are the total of positive and negative, all the way from the battery.

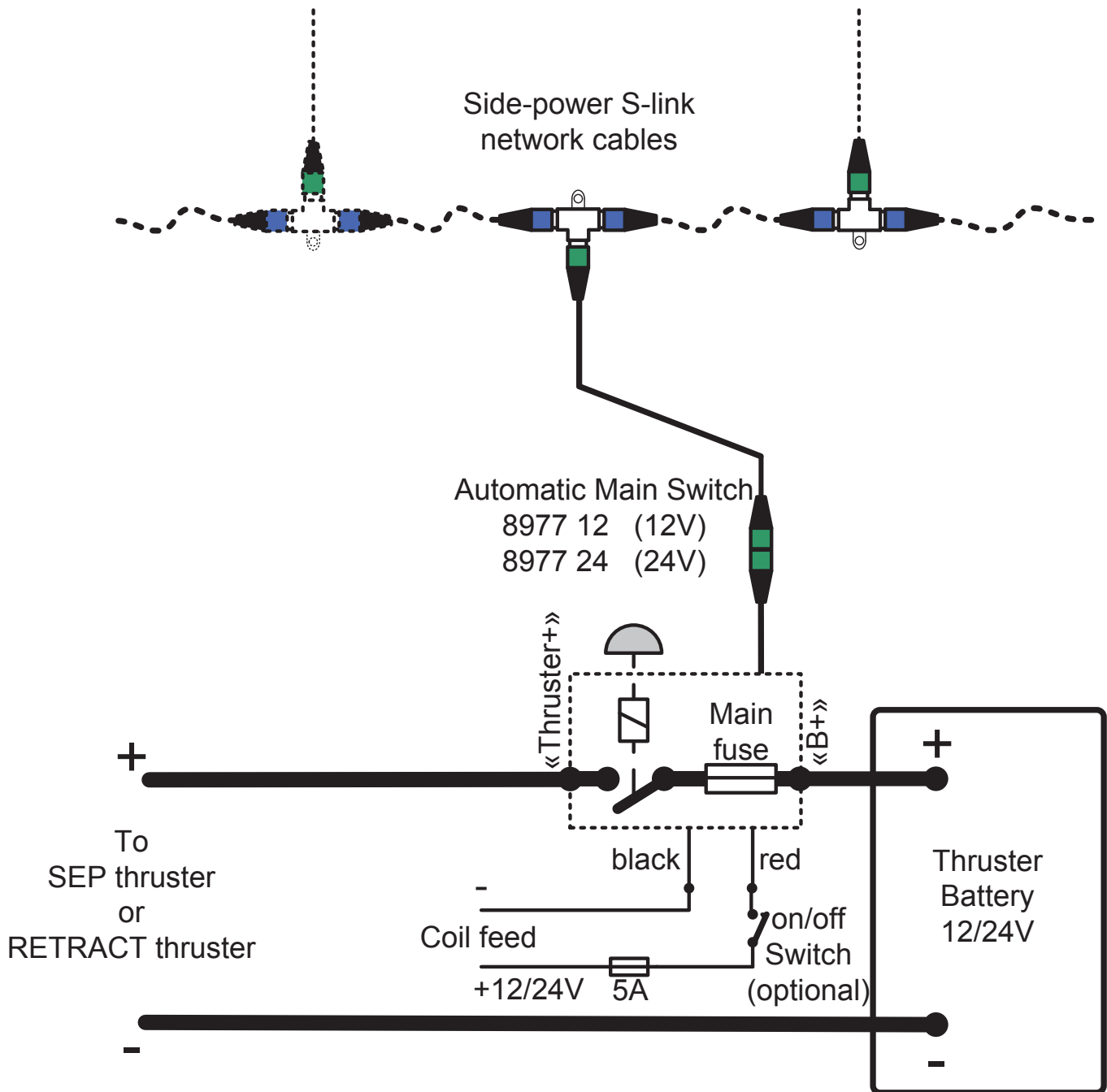


DESCRIPTION OF WIRING DIAGRAMS (as shown on opposite page):

- Order correct main fuse depending on thruster it is being fitted with.
- Coil feed can be taken from any 12V or 24V battery source. If coil is fed from a source that already have a main switch, then the on/off switch is not required.
- S-Link cable must be connected to S-Link network

Automatic Main Switch has to be assigned to be bow or stern (default: bow) This is done from the control panel - read the control panel manual for instructions.

NB! Fit only one thruster to each automatic main switch.



Service / maintenance

- The automatic main switch does not require specific service or maintenance other than normal service and control that should be performed on all electric equipment regularly which includes:
 - Keeping the equipment clean and dry.
 - Making sure all cable and other connections are tight and without signs of excessive heat or corrosion.

Trouble shooting

Feedback to control panels:

- Manual override: Manual override button has been pushed, pull manual override button to activate.
- Fuse blown: Replace fuse or check if main cable from battery and main cable to thruster has been switched connections.
- Communication fail: Panel has no communication with main switch. Check S-link or power connection.
- Power failure: Main switch has no power, Check 5A fuse, power connection and if main switch has power on red and black wire.

If you are unable to identify and resolve the problem by these actions, please contact the nearest Sidepower service point for assistance and please have the notes from your trouble shooting handy to inform the service person of what you have already checked and found.



DECLARATION OF CONFORMITY

We, **Sleipner Motor AS**
P.O. Box 519
N-1612 Fredrikstad, Norway

**declare that this product complies with the essential health
and safety requirements according to Directive 89 / 336 / EEC
of 23 May 1989 amended by 92 / 31 / EEC and 93 / 68 / EEC.**

Service Centres

Argentina

Trimer SA
Buenos Aires
Tel: +54 11 4580 0444
Fax: +54 11 4580 0440
www.trimer.com.ar
trimer@trimer.com.ar

Australia

AMI Sales
Freemantle, WA
Tel: +61 89 331 0000
Fax: +61 89 314 2929
ami@amisales.com.au

Austria

G. Ascherl GmbH
Hard, Bregenz
Tel: +43 5574 899000
Fax: +43 5574 89900-10
www.ascherl.at
office@ascherl.at

Benelux

ASA Boot Electro
Watergang
Tel: +31 20 436 9100
Fax: +31 20 436 9109
www.asabootelectro .nl
info@asabootelectro.nl

Brazil

Electra Service Ltda.
Guaruja
Tel: +55 13 3354 3599
Fax: +55 13 3354 3471
www.electraservice.br.com
albertoni@electraservice.com.br

Bulgaria

Yachting BG
Burgas
tel: +359 56 919090
fax: +359 56 919091
www.yachting.bg
info@yachting.bg

Canada

Imtra Corporation
New Bedford, MA
Tel: +1 508 995 7000
Fax: +1 508 998 5359
www.imtra.com
side-power@imtra.com

China/Hong Kong

Storm Force Marine Ltd.
Wanchai, Hong Kong
Tel: +852 2866 0114
Fax: +852 2866 9260
www.stormforcemarine.com
sales@stormforcemarine.com

Croatia

Yacht Supplier
Icici
Tel: +385 51 704 500
Fax: +385 51 704 600
acyachting@gmail.com

Cyprus

Ocean Marine Equipment Ltd
Limassol
Tel: +357 253 69731
Fax: +357 253 52976
oceanm@spidernet.com.cy

Denmark

Gertsen & Olufsen AS
Hørsholm
Tel: +45 4576 3600
Fax: +45 4576 1772
www.gertsen-olufsen.dk
info@gertsen-olufsen.dk

Estonia/Latvia/Lithuania

Miltec Systems OÜ
Tallin
Tel: +372 5013997
Fax: +372 6442211
www.miltec.ee
tony@miltec.ee

Finland

Nautikulma OY
Turku
Tel: +358 2 2503 444
Fax: +358 2 2518 470
www.nautikulma.fi
nautikulma@nautikulma.fi

France

Kent Marine Equipment
Nantes
Tel: +33 240 921 584
Fax: +33 240 921 316
www.kent-marine.com
contact@kent-marine.com

Germany

Jabsco GmbH
Norderstedt
Tel: +49 40 535 373-0
Fax: +49 40 535 373-11
www.kent-marine.com
contact@kent-marine.com

Iceland

Maras EHF
Reykjavik
Tel: +354 555 6444
Fax: +354 565 7230
www.maras.is
gummi@maras.is

India

Indo Marine Engineering Co. Pvt. Ltd
Pune, Maharashtra
Tel: +91 20 2712 3003
Fax: +91 20 2712 2295
siddharth@indogroup-asia.com

Ireland

Sleipner Motor Ltd.
South Brent
Tel: +44 1364 649 400
Fax: +44 1364 649 399
andy@sleipner.co.uk

Israel

Atlantis Marine Ltd.
Tel Aviv
Tel: +972 3 522 7978
Fax: +972 3 523 5150
www.atlantis-marine.com
atlantis@inter.net.il

Italy

Saim S.P.A.
Assago-Milan
Tel: +39 02 488 531
Fax: +39 02 488 254 5
www.saim-group.com

Japan

Turtle Marine Inc.
Nagasaki
Tel: +81 95 840 7977
Fax: +81 95 840 7978
www.turtle-marine.com
info@turtle-marine.com

Malta

S & D Yachts Ltd.
Cali
Tel: +356 21 339 908
Fax: +356 21 332 259
www.sdyachts.com
info@sdyachts.com

New Zealand

Advance Trident Ltd.
Auckland
Tel: +64 9 845 5347
Fax: +64 9 415 5348
www.advancetrident.com
service@advancetrident.com

Norway

Sleipner Motor AS
Fredrikstad
Tel: +47 69 30 00 60
Fax: +47 69 30 00 70
www.side-power.com
sidepower@sleipner.no

Poland

Taurus Sea Power SP. Z.O.O
Gdansk
Tel: +48 58 344 30 50
Fax: +48 58 341 67 62

Portugal

Krautli Portugal Lda.
Lisboa
Tel: +351 21 953 56 00
Fax: +351 21 953 56 01
www.krautli.com
contact@krautli.pt

Russia

Standarte
Starbeyevo
Tel: +7 495 575 67 23
Fax: +7 495 575 39 77
www.standarte.ru
info@standarte.ru

South Africa

C-Dynamics
Cape Town
Tel: +27 21 555 3232
Fax: +27 21 555 3230
www.c-dynamics.co.za
info@c-dynamics.co.za

Spain

Imnasa Marine Products
Girona
Tel: +34 902 300214
Fax: +34 902 300215
www.imnasa.com
imnasa@imnasa.com

Sweden

Sleipner AB
Strömstad
Tel: +46 526 629 50
Fax: +46 526 152 95
www.sleipnerab.se

Switzerland

Marine Parts Technics AG
Volketswil
Tel: +41 1 997 40 90
Fax: +41 1 997 40 94
www.marineparts.ch
info@marineparts.ch

Singapore/Malaysia/ Indonesia/Vietnam/Phillippines

Island Marine Services Pte Ltd
Singapore
Tel: +65 6795 2250
Fax: +65 6795 2250
www.island-marine.com
karl@island-marine.com

Taiwan

Mercury Marine Supply
Kaohsiung
Tel: +886 7 3317 293
Fax: +886 7 3314 232

Turkey

Denpar Ltd.
Istanbul
Tel: +90 212 346 1332
Fax: +90 212 346 1329
seda@denpar.com

UK

Sleipner Motor Ltd.
South Brent
Tel: +44 1364 649 400
Fax: +44 1364 649 399
andy@sleipner.co.uk

United Arab Emirates

Teignbridge Propellers & Marine
Equipment Co. Ltd.
Dubai
Tel: +971 4 324 0084
Fax: +971 4 324 0153
teignpro@emirates.net.ae

USA

Imtra Corporation
New Bedford, MA
Tel: +1 508 995 7000
Fax: +1 508 998 5359
www.imtra.com
side-power@imtra.com

