

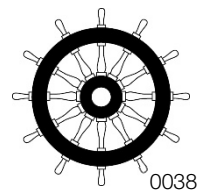
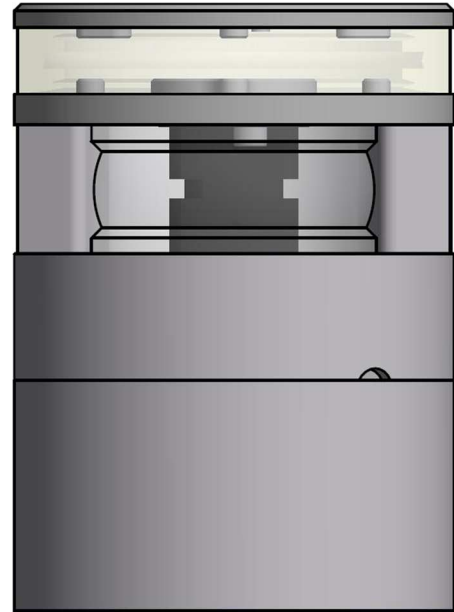
## 300-036+012 – 5NM 225° WHITE MASTHEAD LIGHT & 2NM 360° WHITE ANCHOR LIGHT

The LED masthead light consists of a cluster of LEDs that produces light in the specified angle. The LED anchor light consists of an array of LEDs that produces light in the specified angle.

The precision machined 6082 aluminium housing with a hard coated anodized surface makes the light a rugged and durable housing for the LEDs and electronics contained within, and the polished PMMA lens delivers a clear light with colour ranging that is well within the standard for maritime use.

Lastly all the interior is completely filled with a special potting resin making it water- and vibration proof before each light is subjected to final testing for no less than 16 hours of continuous operation bringing the total test period beyond 24 hours.

Lopolight products are covered by a 5-year limited warranty. This warranty covers direct exchange of the malfunctioning product and is given under the assumption that the lights have been operated within the specifications of lights.



## Technical specifications

Vessel size: **20m - 50m (65' - 164')**

Visibility:

Masthead: **>5 nautical miles**

Anchor light: **>2 nautical miles**

Intensity:

Masthead: **>52 cd**

Anchor light: **>5,4 cd**

Mounting: **Horizontal**

Operating voltage:

Masthead: **22 - 32 VDC**

Anchor light: **10 – 32 VDC**

Number of LEDs:

Masthead: **3**

Anchor light: **28**

Light colour: **White**

Operating temperature: **-25°C to +55°C**

IP Rating: **IP68**

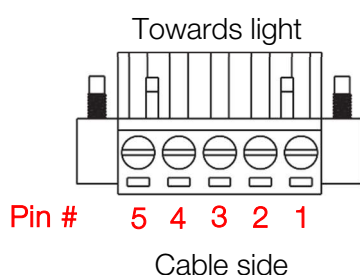
Power consumption;

Masthead: **7 Watt; Current @ 24 VDC: 0,3A**

Anchor light: **2,6 Watt; Current @ 12 VDC: 0,22 A – Current @ 24 VDC: 0,11 A**

Connection: **2 cables consisting of 2 x 0,5 mm<sup>2</sup> leads, a screen and insulation.**

- Pin 1 - Red lead = Power
- Pin 2 - Black lead = GND
- Pin 3 – No lead = Not used
- Pin 4 - No lead = Not used
- Pin 5 - No lead = Not used



Certification: **The product is certified by Lloyds (LR) and certificates can be found on [www.lopolight.com](http://www.lopolight.com) under certificates.**

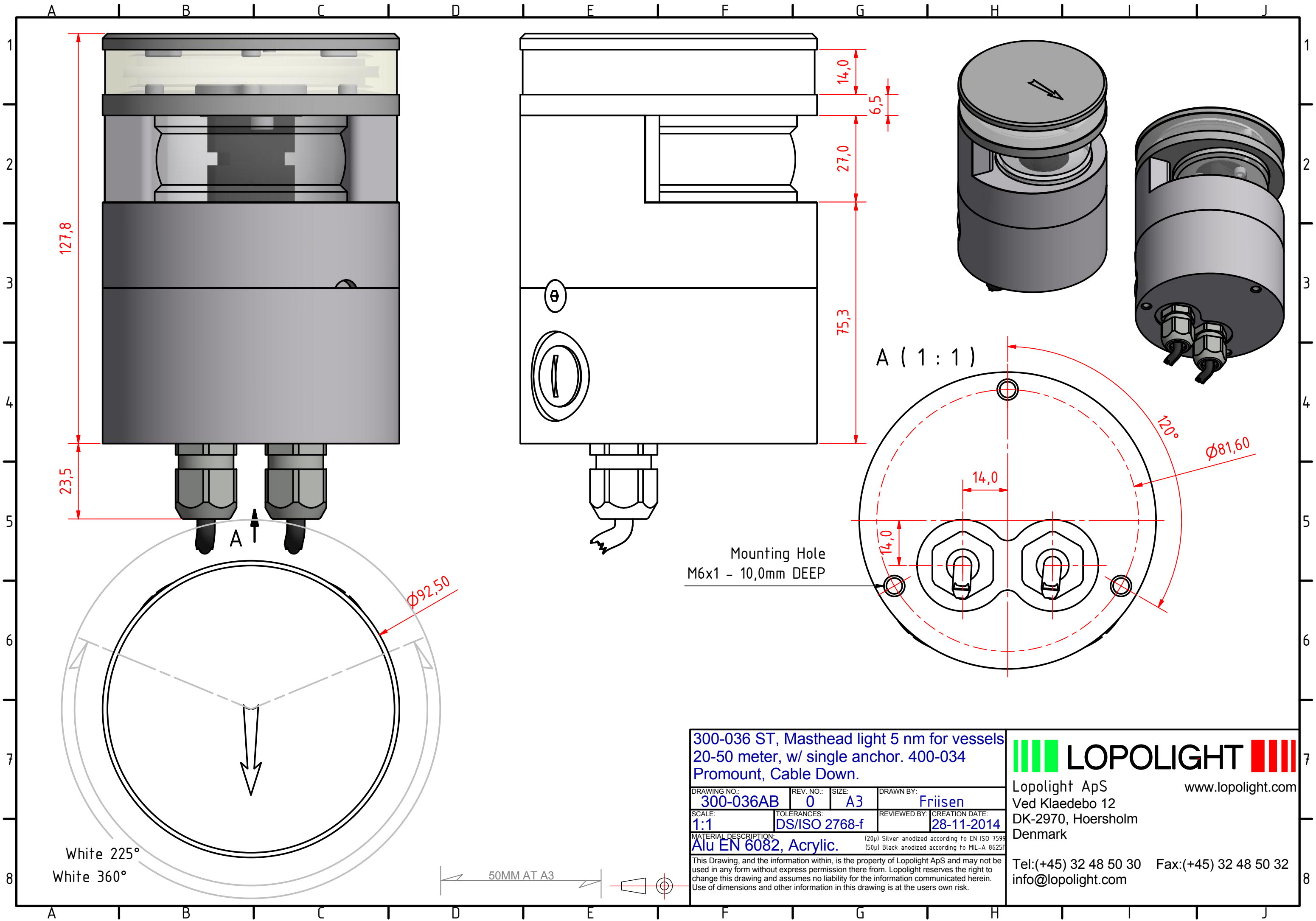
Approvals: **COLREG72 / EN14744 / IEC 60945 / USCG / UL1104**

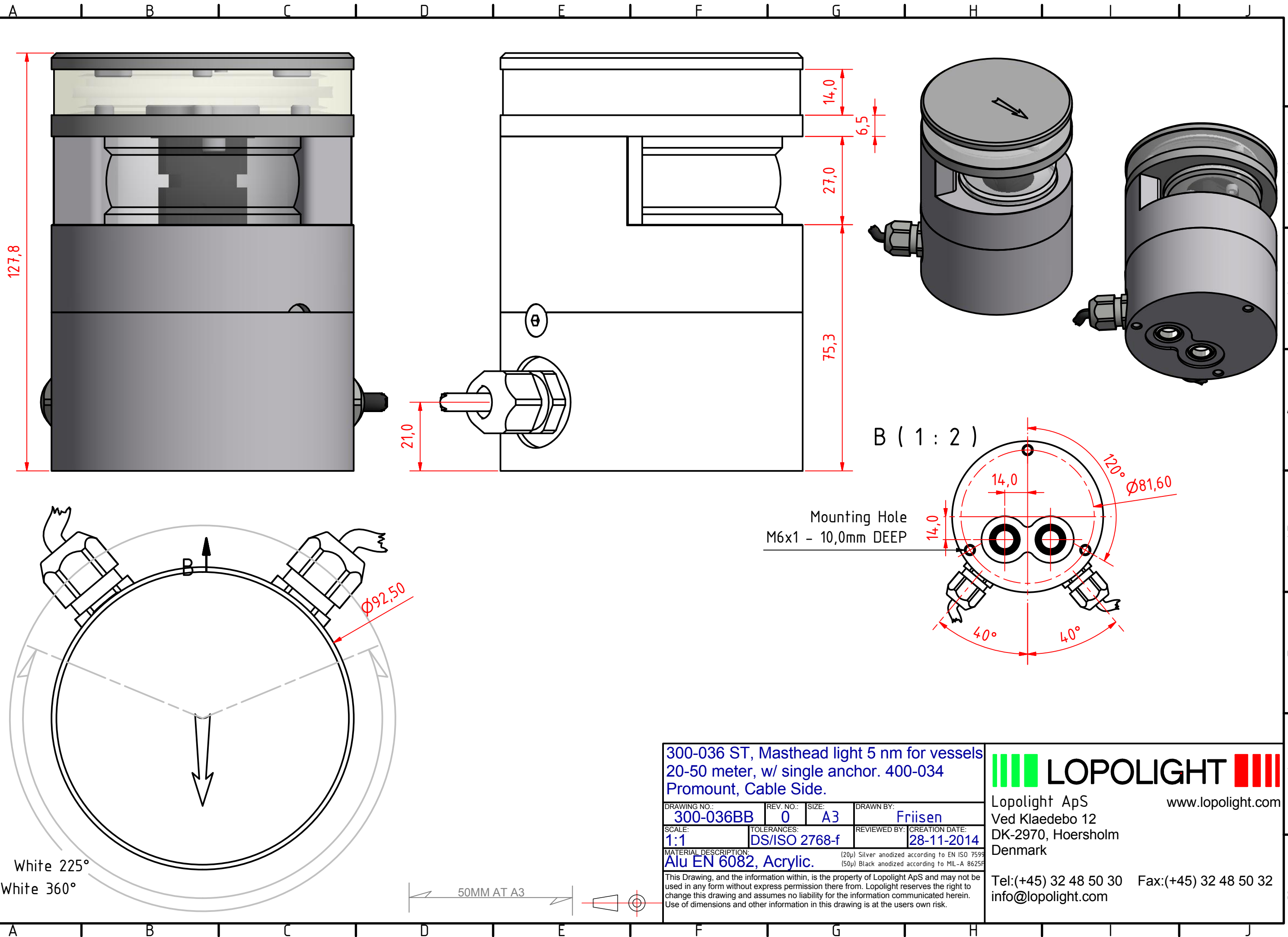
Dimensions: **See drawing**

Weight: **1,43kg**

Included in the package:

- 1 Stacked navigation light
- 2 Cable glands
- 2 Blinding caps
- 2 Connector plugs
- Installation instructions





300-036 ST, Masthead light 5 nm for vessels  
20-50 meter, w/ single anchor. 400-034  
Promount, Cable Side.

DRAWING NO.: 300-036BB	REV. NO.: 0	SIZE: A3	DRAWN BY: Friisen
---------------------------	----------------	-------------	----------------------

SCALE: 1:1	TOLERANCES: DS/ISO 2768-f	REVIEWED BY:	CREATION DATE: 28-11-2014
---------------	------------------------------	--------------	------------------------------

MATERIAL DESCRIPTION:  
Alu EN 6082, Acrylic. (20µ) Silver anodized according to EN ISO 7599  
(50µ) Black anodized according to MIL-A 8625F

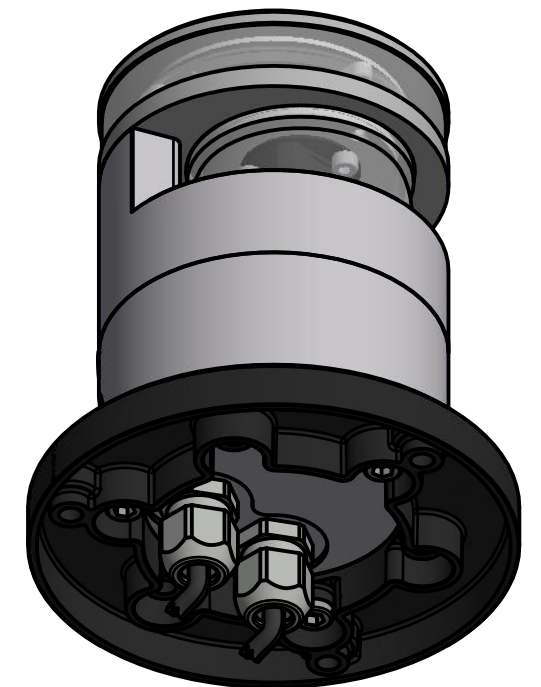
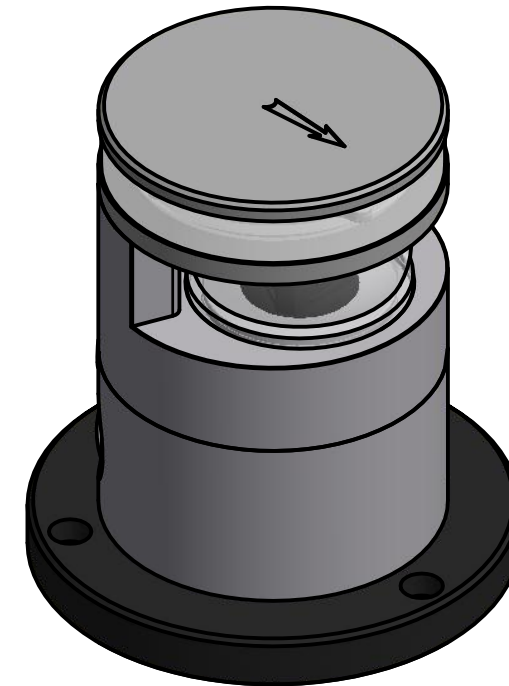
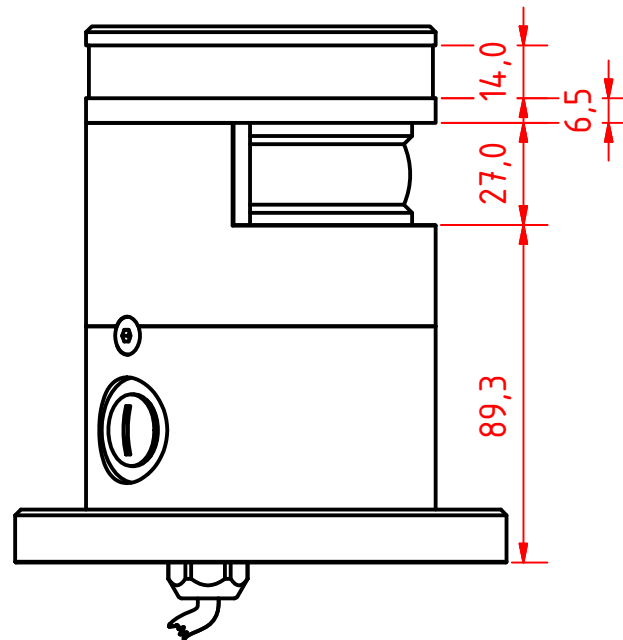
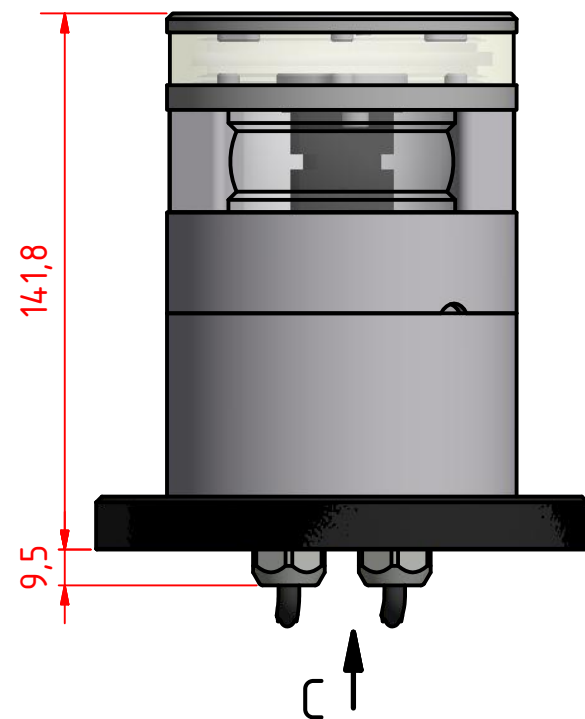
This Drawing, and the information within, is the property of Lopolight ApS and may not be used in any form without express permission there from. Lopolight reserves the right to change this drawing and assumes no liability for the information communicated herein. Use of dimensions and other information in this drawing is at the users own risk.

**LOPOLIGHT**

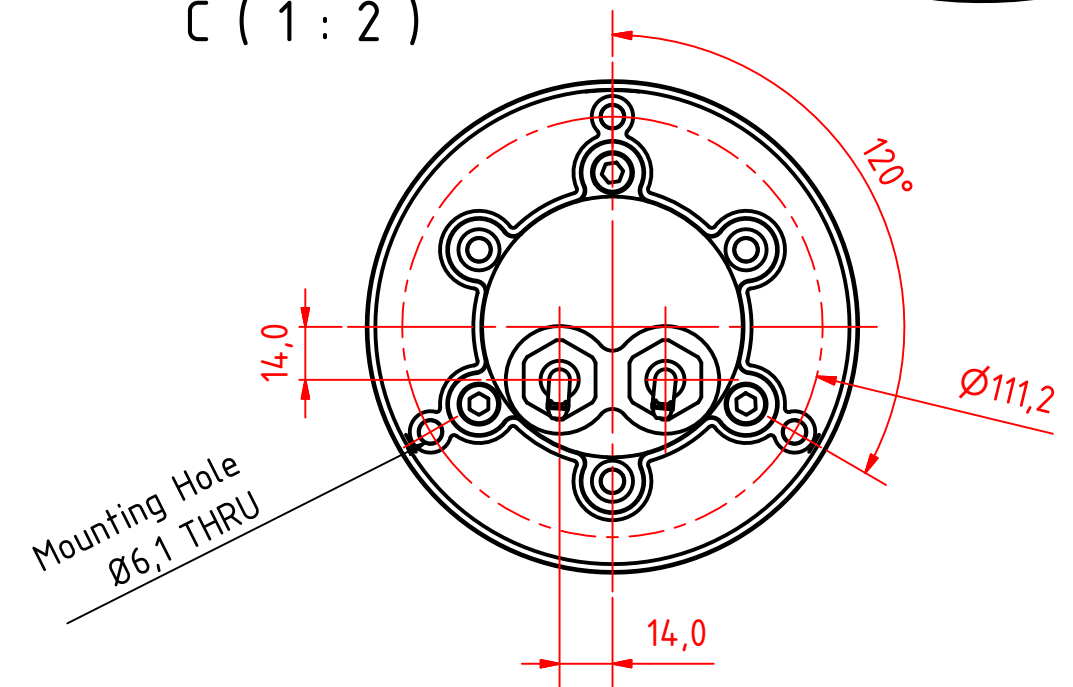
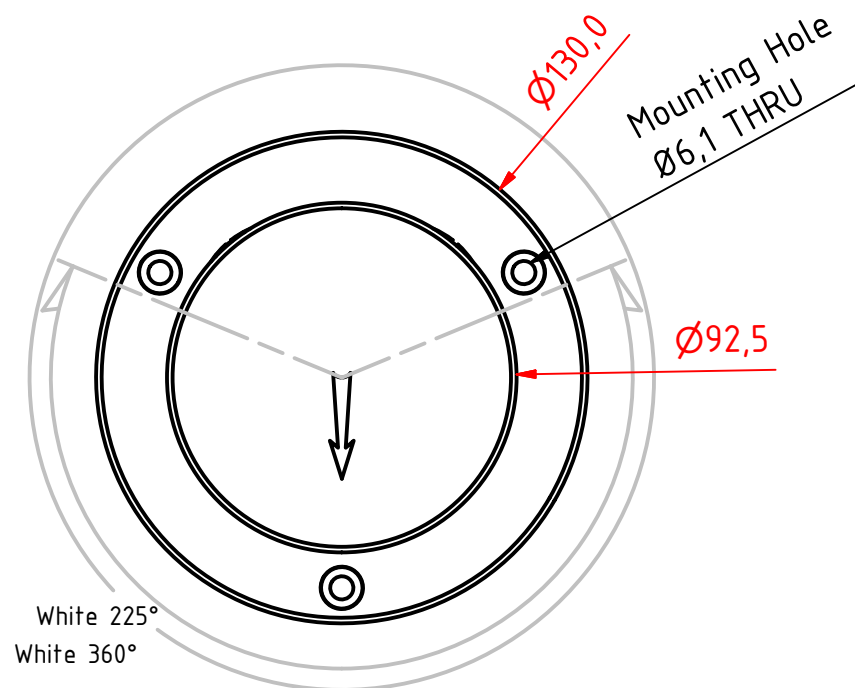
Lopolight ApS  
Ved Klaedebo 12  
DK-2970, Hoersholm  
Denmark

[www.lopolight.com](http://www.lopolight.com)

Tel: (+45) 32 48 50 30 Fax: (+45) 32 48 50 32  
[info@lopolight.com](mailto:info@lopolight.com)



C ( 1 : 2 )



300-036 ST, Masthead light 5 nm for vessels  
20-50 meter, w/ single anchor. 400-034  
Promount, 400-404 PE Base Plate, CD.

DRAWING NO.: <b>300-036CB</b>	REV. NO.: <b>0</b>	SIZE: <b>A3</b>	DRAWN BY: <b>Friisen</b>
SCALE: <b>1:2</b>	TOLERANCES: <b>DS/ISO 2768-f</b>	REVIEWED BY:	CREATION DATE: <b>28-11-2014</b>

MATERIAL DESCRIPTION:  
**Alu EN 6082, Acrylic, PE** (20µ) Silver anodized according to EN ISO 7599  
(50µ) Black anodized according to MIL-A 8625F

This Drawing, and the information within, is the property of Lopolight ApS and may not be used in any form without express permission there from. Lopolight reserves the right to change this drawing and assumes no liability for the information communicated herein. Use of dimensions and other information in this drawing is at the users own risk.

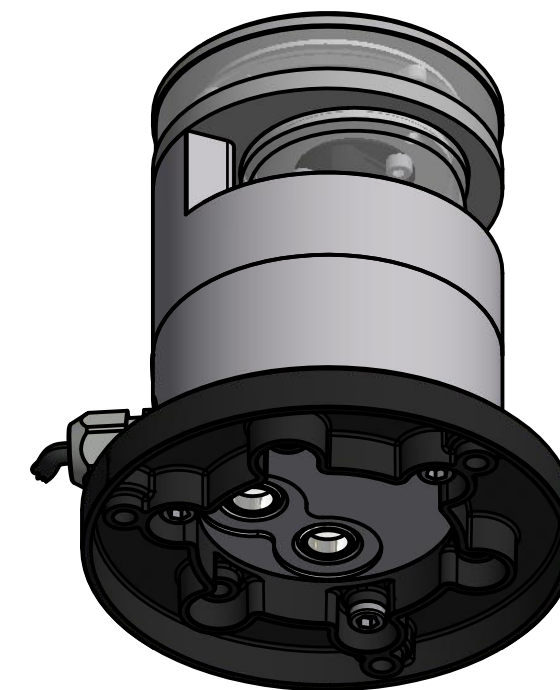
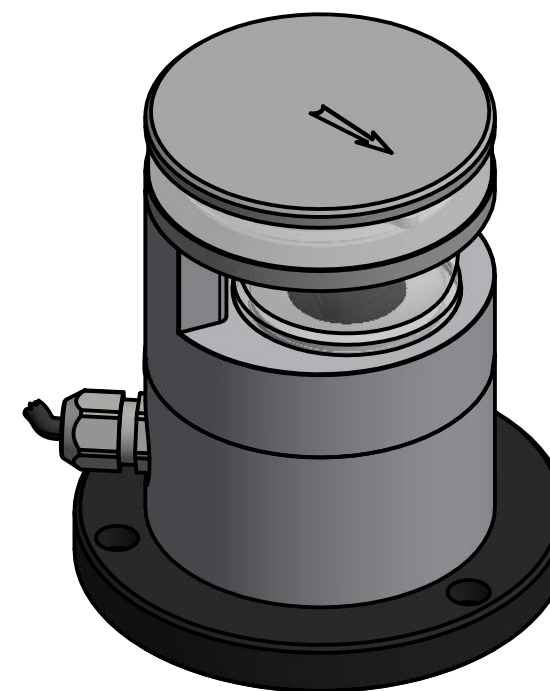
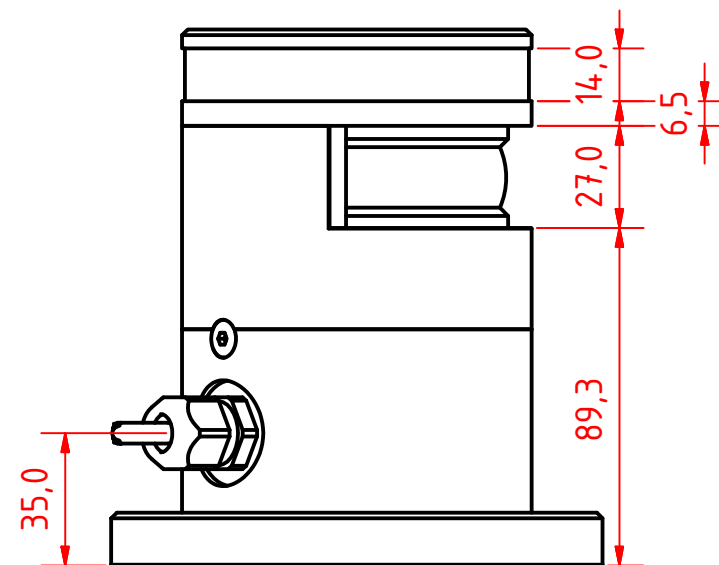
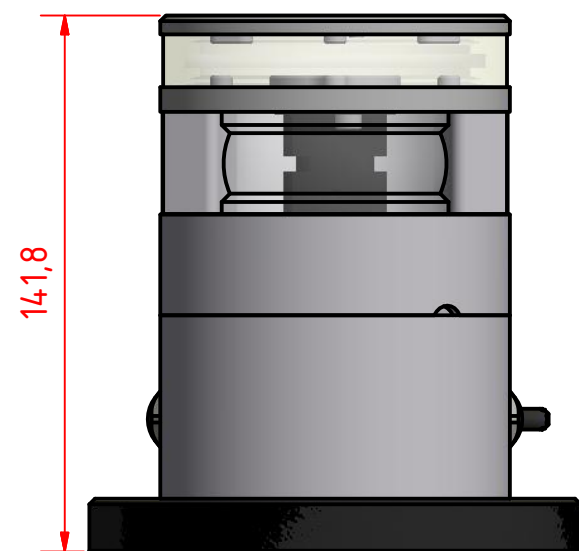
**LOPOLIGHT**

Lopolight ApS  
Ved Klaedebo 12  
DK-2970, Hoersholm  
Denmark

Tel: (+45) 32 48 50 30 Fax: (+45) 32 48 50 32  
info@lopolight.com

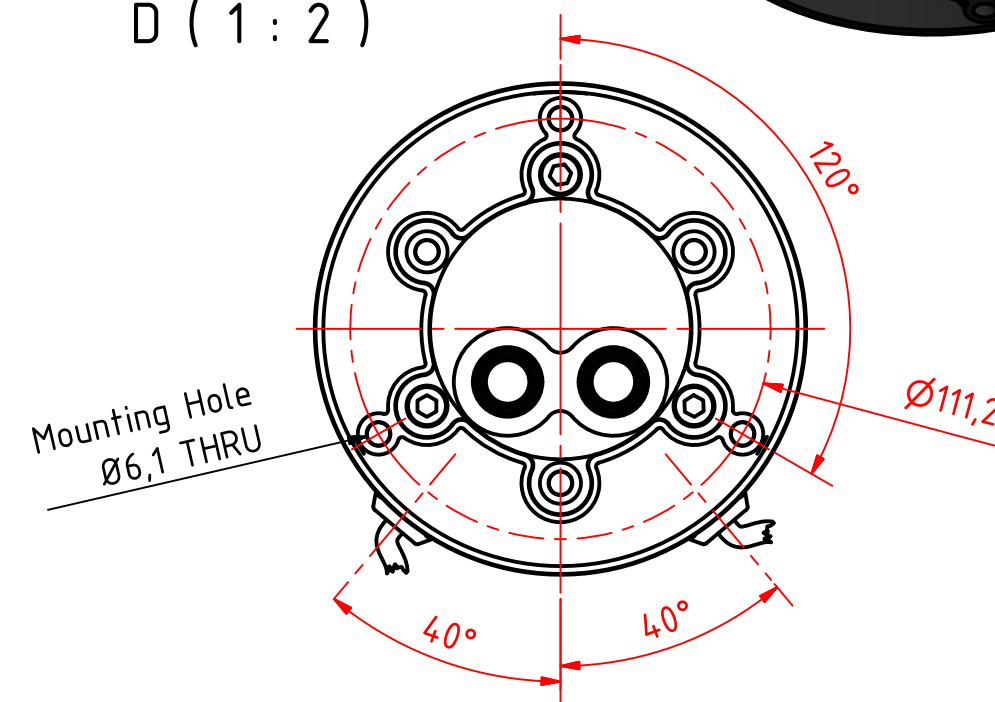
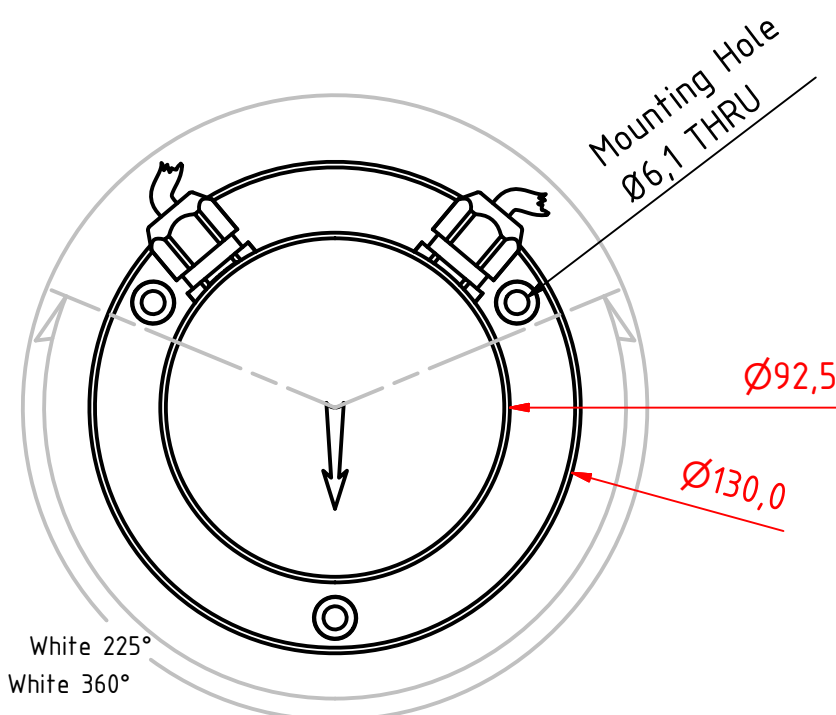






D ( 1 : 2 )

D ↑



300-036 ST, Masthead light 5 nm for vessels  
20-50 meter, w/ single anchor. 400-034  
Promount, 400-404 PE Base Plate, CS.

DRAWING NO.: 300-036DB	REV. NO.: 0	SIZE: A3	DRAWN BY: Friisen
SCALE: 1:2	TOLERANCES: DS/ISO 2768-f	REVIEWED BY:	CREATION DATE: 28-11-2014

MATERIAL DESCRIPTION:  
Alu EN 6082, Acrylic, PE (20µ) Silver anodized according to EN ISO 7599  
(50µ) Black anodized according to MIL-A 8625F

This Drawing, and the information within, is the property of Lopolight ApS and may not be used in any form without express permission there from. Lopolight reserves the right to change this drawing and assumes no liability for the information communicated herein. Use of dimensions and other information in this drawing is at the users own risk.

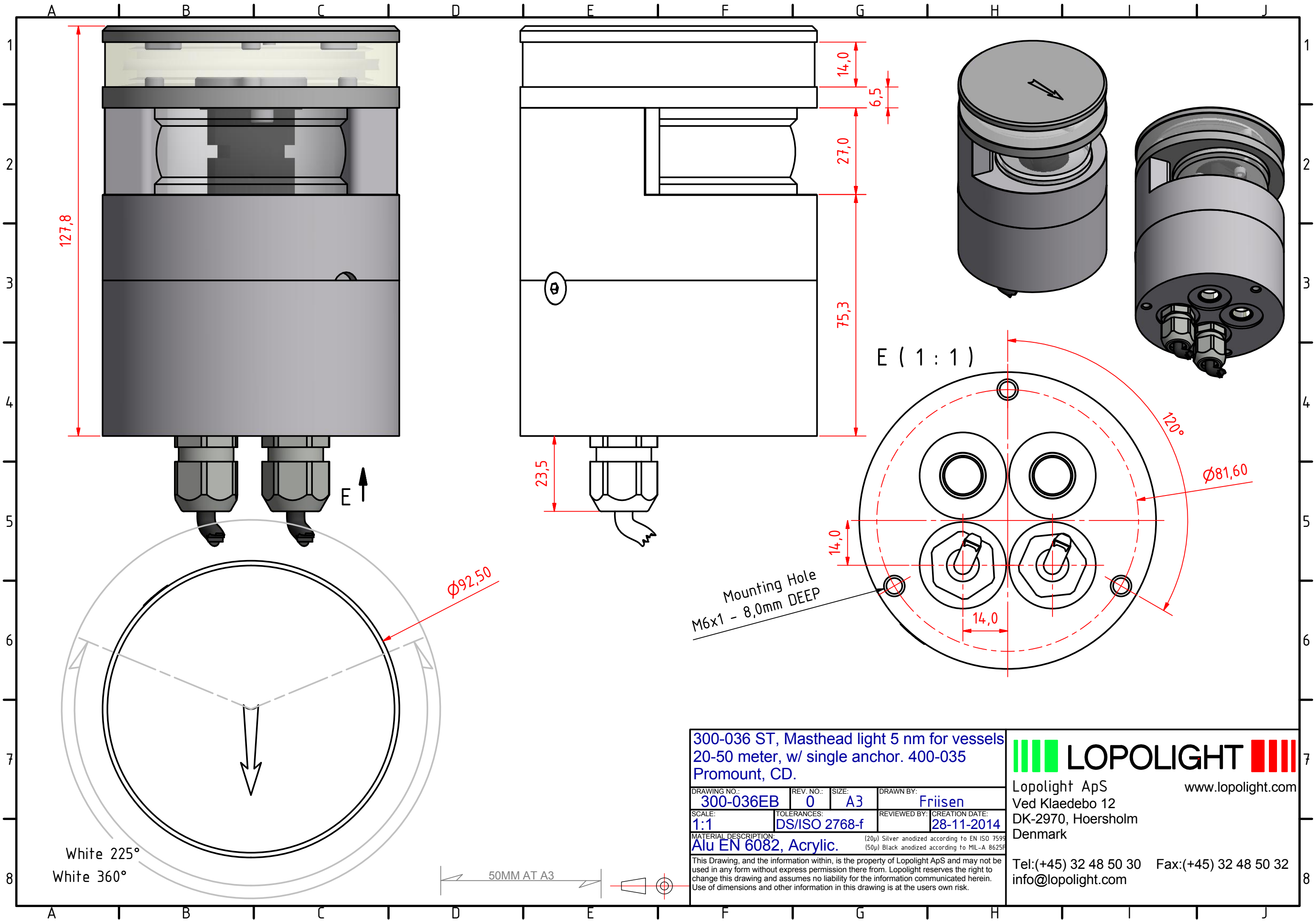
**LOPOLIGHT**

Lopolight ApS  
Ved Klaedebo 12  
DK-2970, Hoersholm  
Denmark

www.lopolight.com

Tel: (+45) 32 48 50 30 Fax: (+45) 32 48 50 32  
info@lopolight.com

50MM AT A3



300-036 ST, Masthead light 5 nm for vessels  
20-50 meter, w/ single anchor. 400-035  
Promount, CD.

DRAWING NO.:	REV. NO.:	SIZE:	DRAWN BY:
300-036EB	0	A3	Friisen
SCALE:	TOLERANCES:	REVIEWED BY:	CREATION DATE:
1:1	DS/ISO 2768-f		28-11-2014
MATERIAL DESCRIPTION:			
Alu EN 6082, Acrylic.			

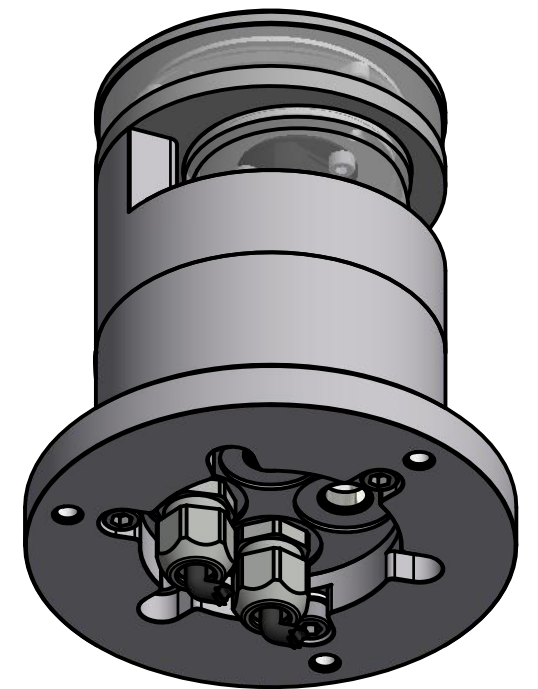
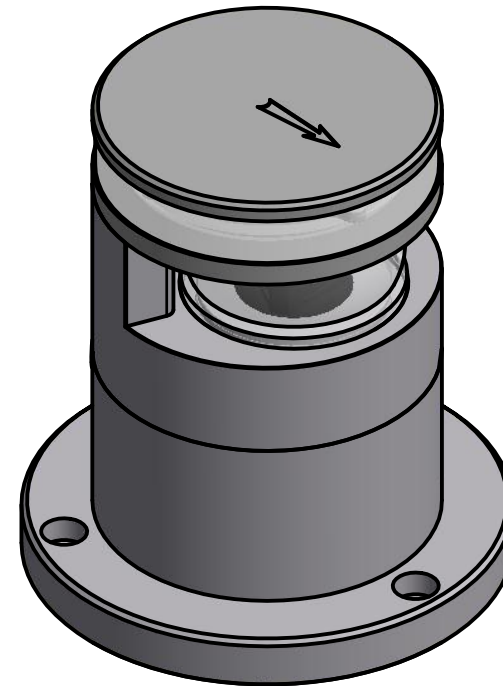
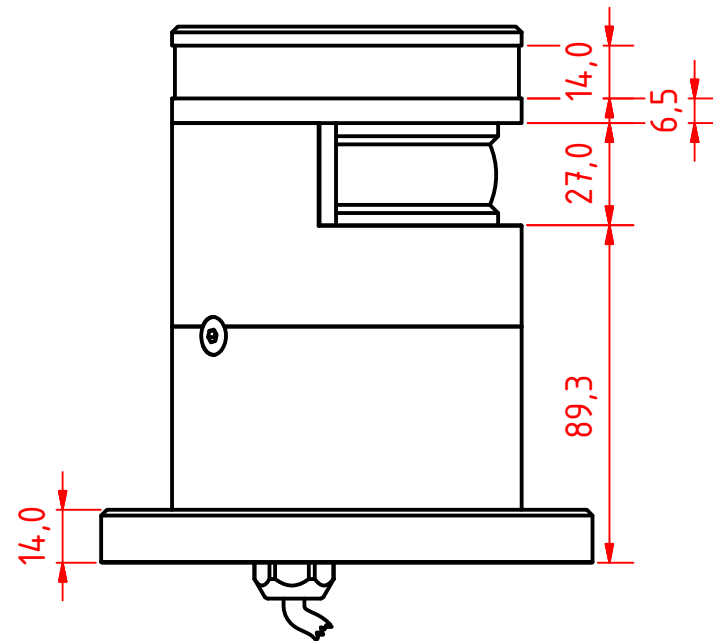
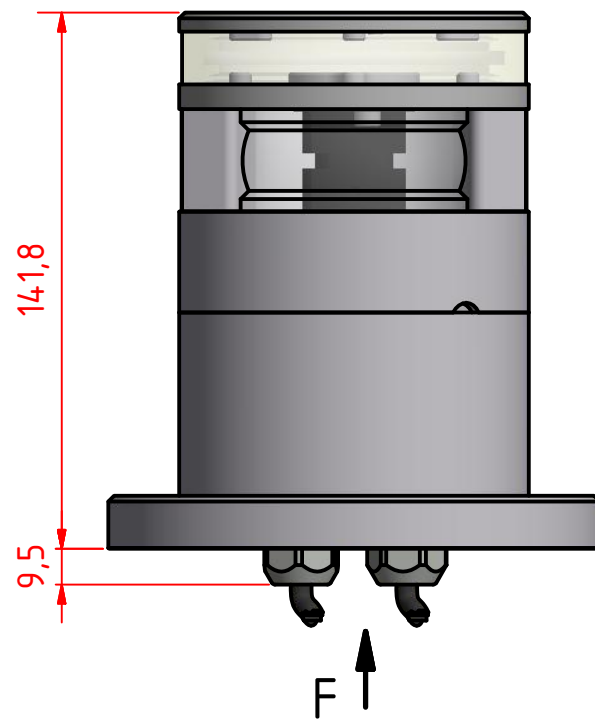
(20µ) Silver anodized according to EN ISO 7599  
(50µ) Black anodized according to MIL-A 8625F  
This Drawing, and the information within, is the property of Lopolight ApS and may not be used in any form without express permission there from. Lopolight reserves the right to change this drawing and assumes no liability for the information communicated herein. Use of dimensions and other information in this drawing is at the users own risk.



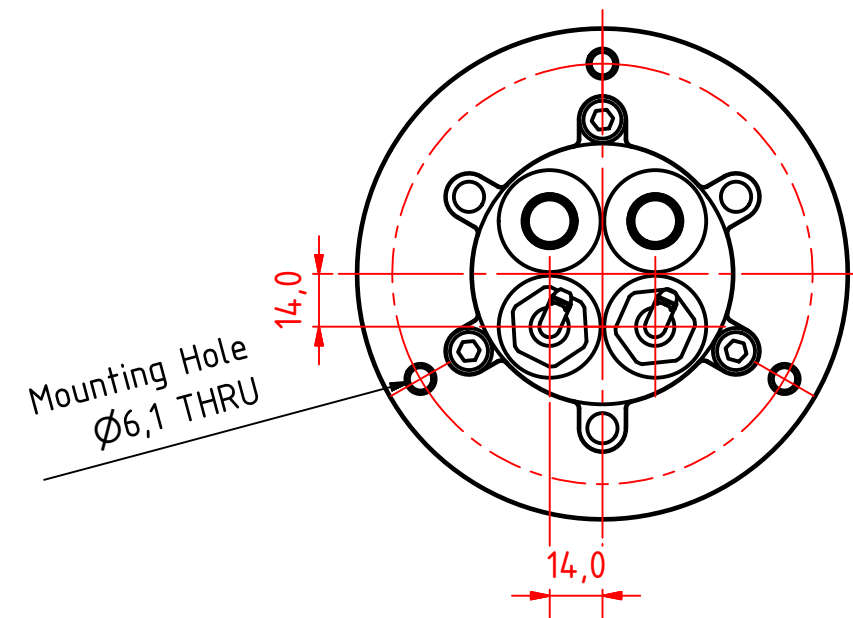
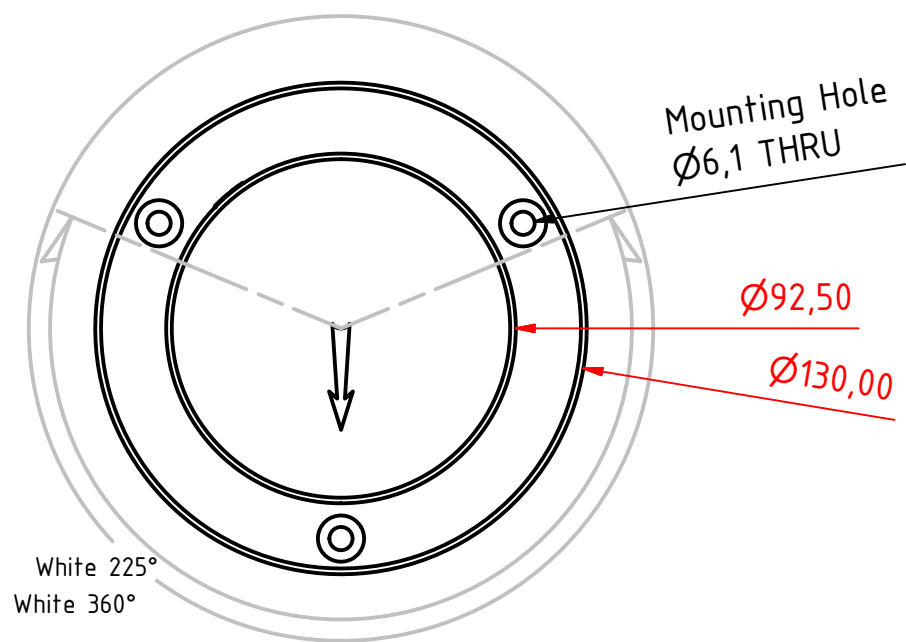
Lopolight ApS  
Ved Klaedebo 12  
DK-2970, Hoersholm  
Denmark  
www.lopolight.com

Tel:(+45) 32 48 50 30 Fax:(+45) 32 48 50 32  
info@lopolight.com





F ( 1 : 2 )



300-036 ST, Masthead light 5 nm for vessels  
20-50 meter, w/ single anchor. 400-035  
Promount, 400-401 Alu Base Plate, CD.

DRAWING NO.: 300-036FB	REV. NO.: 0	SIZE: A3	DRAWN BY: Friisen
SCALE: 1:2	TOLERANCES: DS/ISO 2768-f	REVIEWED BY:	CREATION DATE: 28-11-2014
MATERIAL DESCRIPTION: Alu EN 6082, Acrylic.			

(20µ) Silver anodized according to EN ISO 7599  
(50µ) Black anodized according to MIL-A 8625F  
This Drawing, and the information within, is the property of Lopolight ApS and may not be used in any form without express permission there from. Lopolight reserves the right to change this drawing and assumes no liability for the information communicated herein. Use of dimensions and other information in this drawing is at the users own risk.

**LOPOLIGHT**

Lopolight ApS  
Ved Klaedebo 12  
DK-2970, Hoersholm  
Denmark

www.lopolight.com

Tel:(+45) 32 48 50 30 Fax:(+45) 32 48 50 32  
info@lopolight.com

