

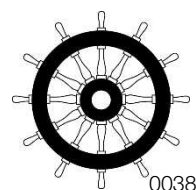
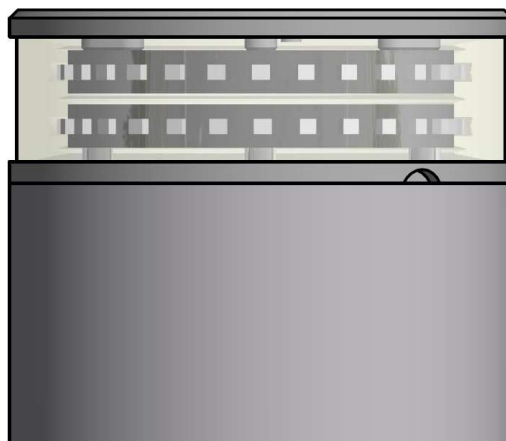
200-012ST – 2NM 360° WHITE DOUBLE ANCHOR LIGHT

The double LED light consists of two (2) individual lights which can be activated separately. One is dedicated as the primary, the other the secondary.

The precision machined 6082 aluminium housing with a hard coated anodized surface makes the light a rugged and durable housing for the LEDs and electronics contained within, and the polished PMMA lens delivers a clear light with colour ranging that is well within the standard for maritime use.

Lastly all the interior is completely filled with a special potting resin making it water- and vibration proof before each light is subjected to final testing for no less than 16 hours of continuous operation bringing the total test period beyond 24 hours.

Lopolight products are covered by a 5-year limited warranty. This warranty covers direct exchange of the malfunctioning product and is given under the assumption that the lights have been operated within the specifications of lights.



Technical specifications

Vessel size: <50m (<164')

Visibility: >2 nautical miles

Intensity: >5,4cd

Mounting: Horizontal, see the K-Lock specifications sheet for options.

Operating voltage: 10 - 32 V DC

Number of LEDs: 28 per light, 56 in total

Light colour: **White**

Operating temperature: -25°C to +55°C

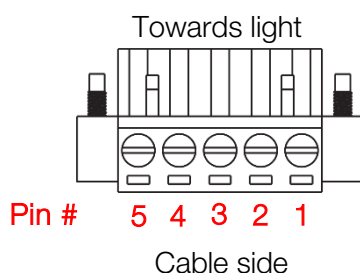
IP rating: **IP68**

Power consumption; 2,6 Watt; Current @ 12 VDC: 0,22A - Current @ 24 VDC: 0,11A

Connection: 2 M20x1.5 thread borings for cable glands located on the side, 2 M20x1.5 thread borings for cable glands located on the bottom (see drawing for details).

Cabling: 2 cables consisting of 2 x 0,5 mm² leads, a screen and insulation.

- Pin 1 - Red lead = Primary light power
- Pin 2 - Black lead = Primary light GND
- Pin 3 - No lead = Not used
- Pin 4 - Red = Secondary light power
- Pin 5 - Black = Secondary light GND



Certification: The product is certified by Lloyds (LR) and certificates can be found on www.lopolight.com under certificates.

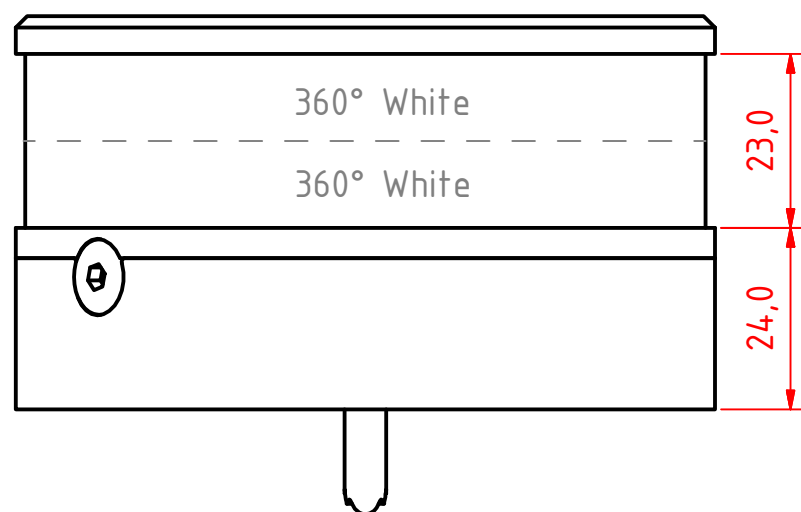
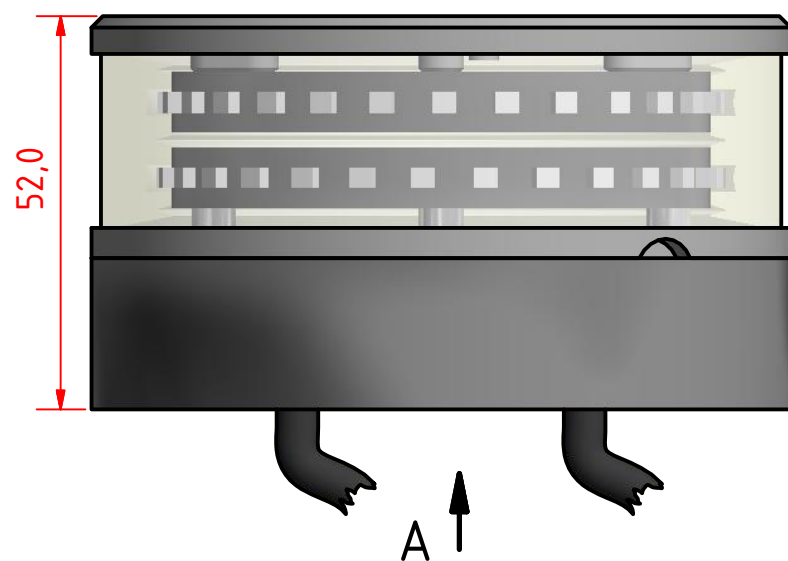
Approvals: COLREG72 / EN14744 / IEC 60945 / USCG / UL1104

Dimensions: **See drawing**

Weight: **0,8kg**

Included in the standard package:

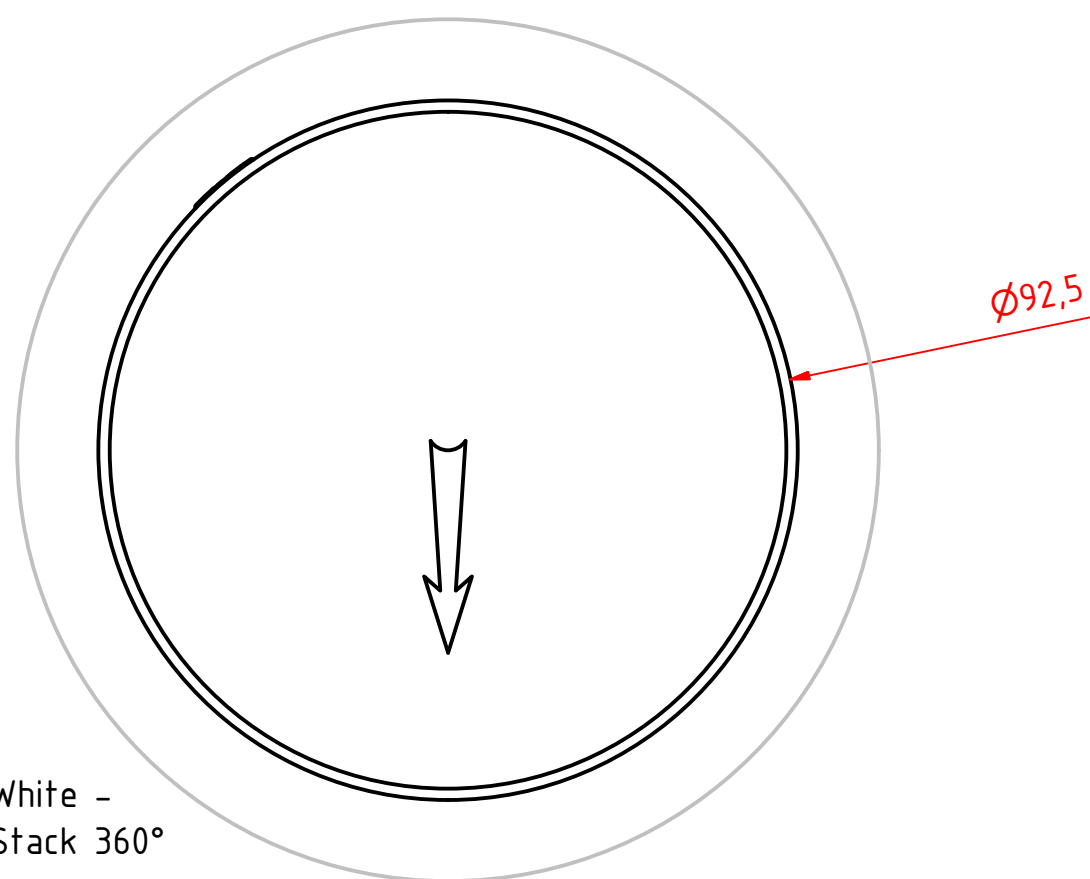
- 1x Double navigation light mounted on 400-034 base
- 1x HDPE base plate & 3x M6x14 screw
- 2x M20x1.5 Cable glands (cable diameters 7 – 13mm)
- 2x M20x1.5 Blinding caps
- 2x Connector plugs
- Installation instructions



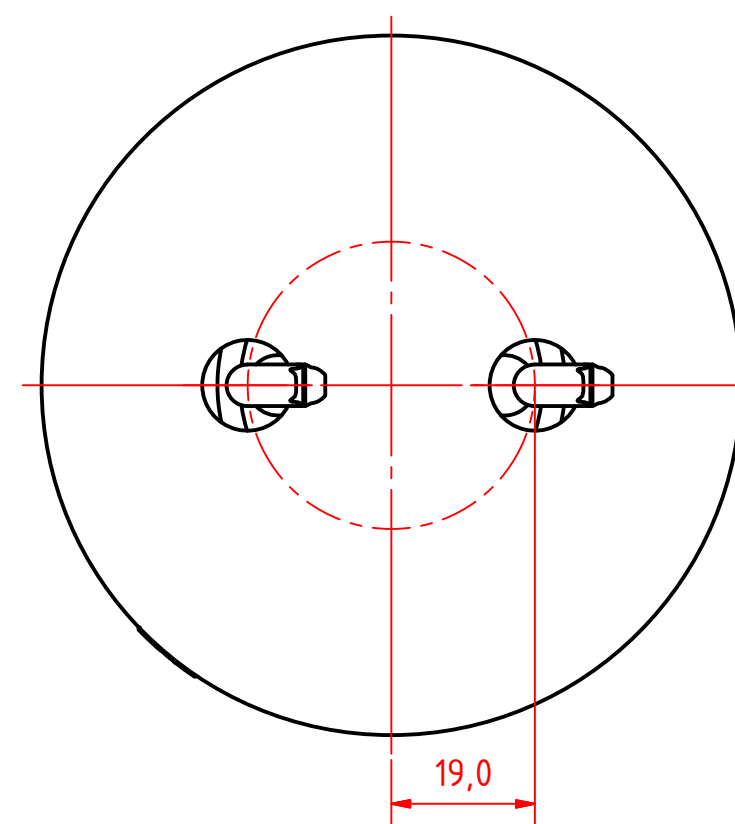
A (1 : 1)

Note:

The PE Plastic base is intended for fitting on site and can be either drilled for mounting screws from above or drilled and tapped from below. 6mm machine screws with nuts and washers are recommended for secure mounting.



White -
Stack 360°



Rev1: 05/02/15 Construction alteration and Drawing number alteration.

200-012ST, 360° White - Anchor, Primary & Secondary, PE Base.

DRAWING NO.: 200-012AH	REV. NO.: 1	SIZE: A3	DRAWN BY: Friisen
SCALE: 1:1	TOLERANCES: DS/ISO 2768-f	REVIEWED BY:	CREATION DATE: 25-Sep-2014
MATERIAL DESCRIPTION: EN 6082 Alu, Acrylic. (20µ) Silver anodized according to EN ISO 7599 (50µ) Black anodized according to MIL-A 8625F			

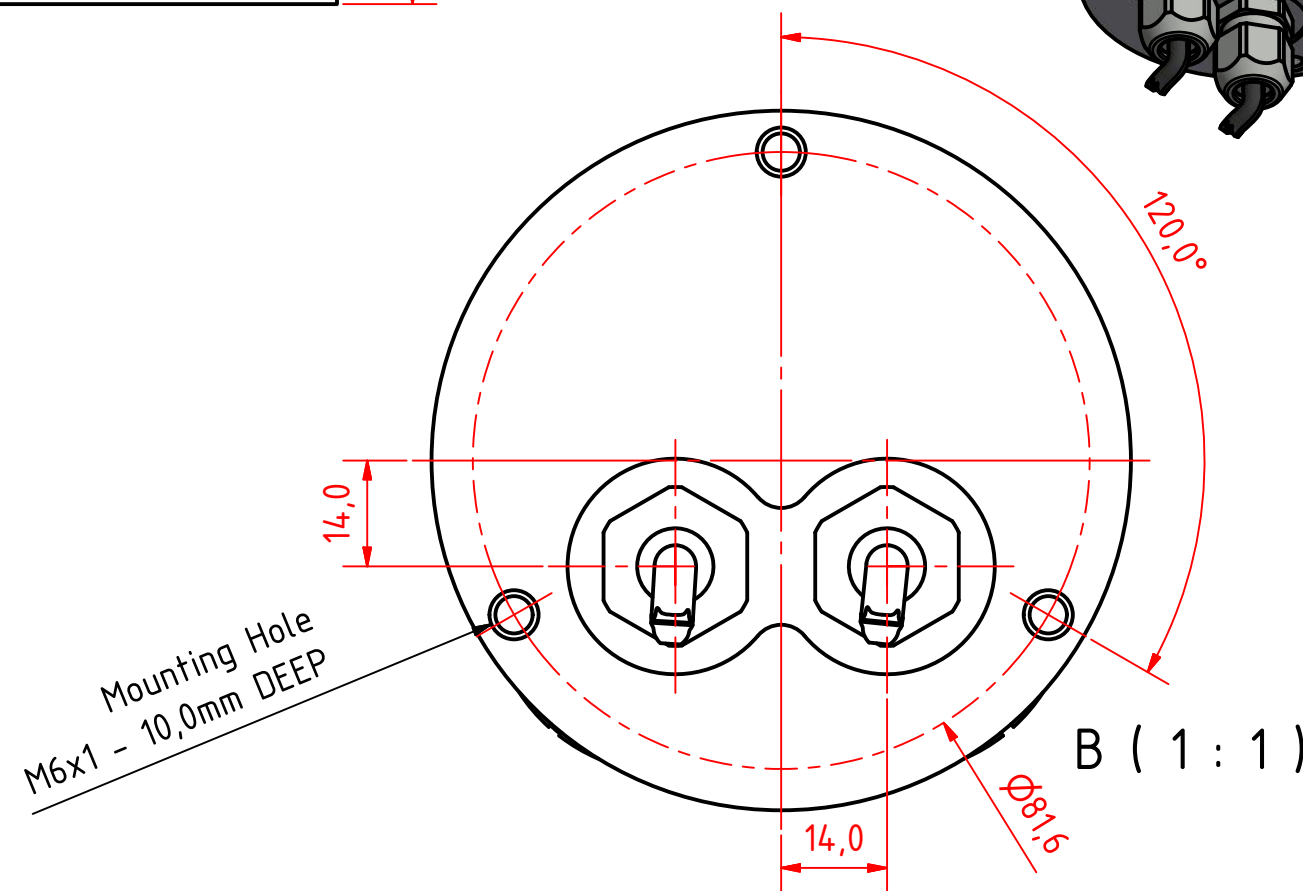
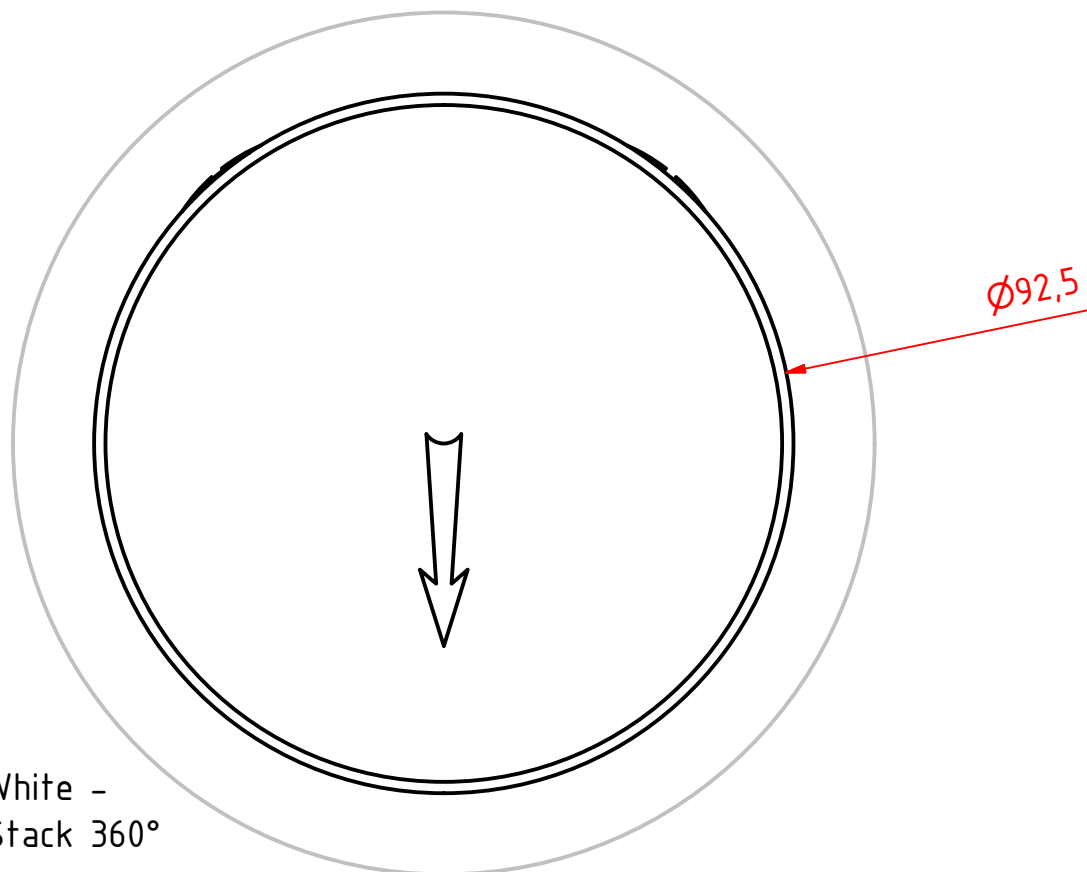
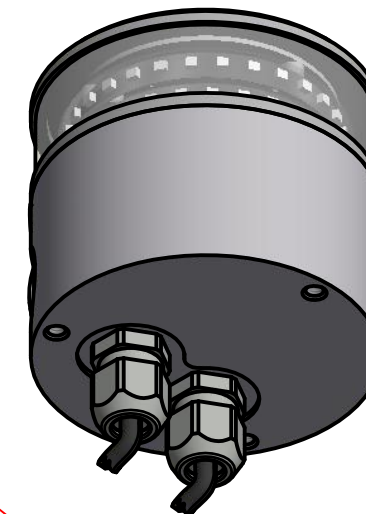
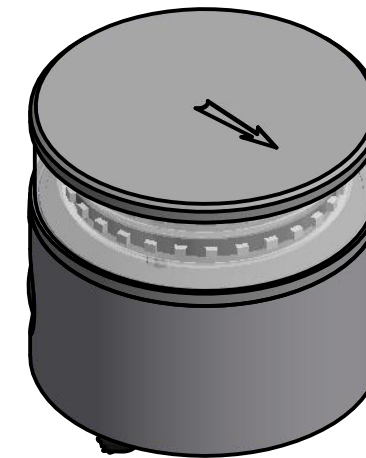
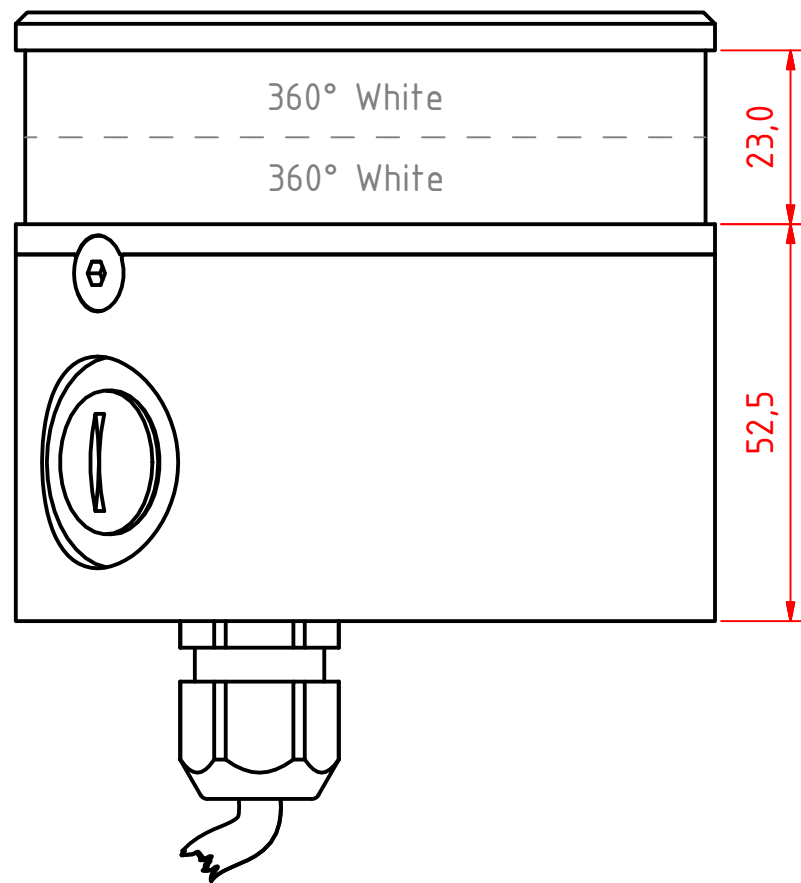
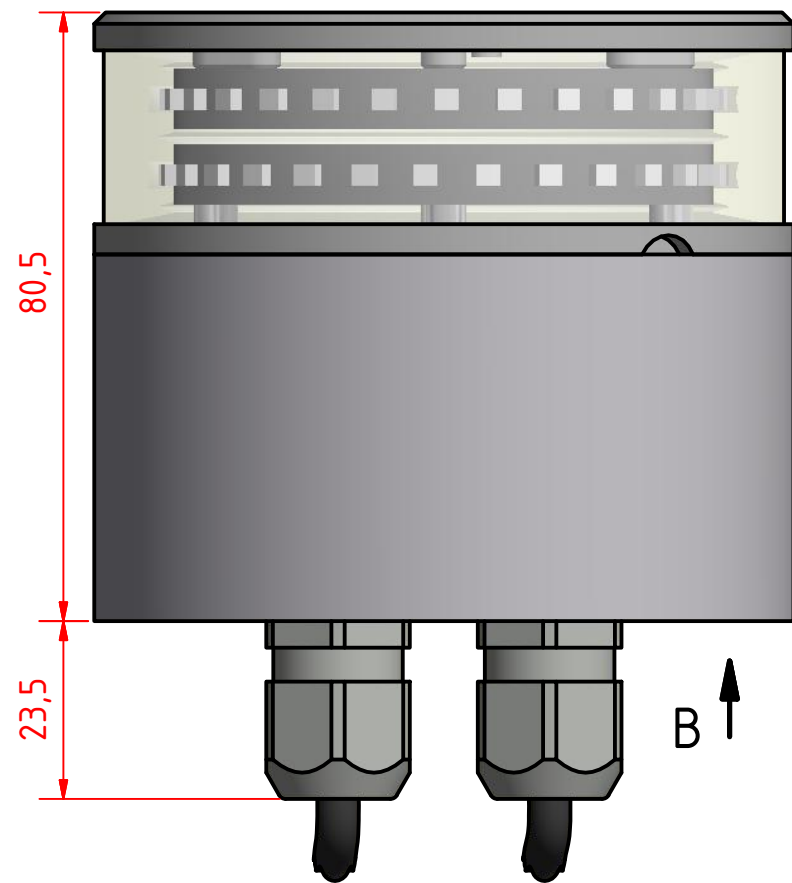
This Drawing, and the information within, is the property of Lopolight ApS and may not be used in any form without express permission there from. Lopolight reserves the right to change this drawing and assumes no liability for the information communicated herein. Use of dimensions and other information in this drawing is at the users own risk.

LOPOLIGHT

Lopolight ApS
Ved Klaedebo 12
DK-2970, Hoersholm
Denmark

Tel:(+45) 32 48 50 30 Fax:(+45) 32 48 50 32
info@lopolight.com





Rev1: 05/02/15 Construction alteration and Drawing number alteration.

200-012ST, 360° White - Anchor, Double Stack, 400-034 Promount, Cable Down.

DRAWING NO.: 200-012BH	REV. NO.: 1	SIZE: A3	DRAWN BY: Friisen
SCALE: 1:1	TOLERANCES: DS/ISO 2768-f	REVIEWED BY:	CREATION DATE: 25-Sep-2014
MATERIAL DESCRIPTION: EN 6082 Alu, Acrylic.			

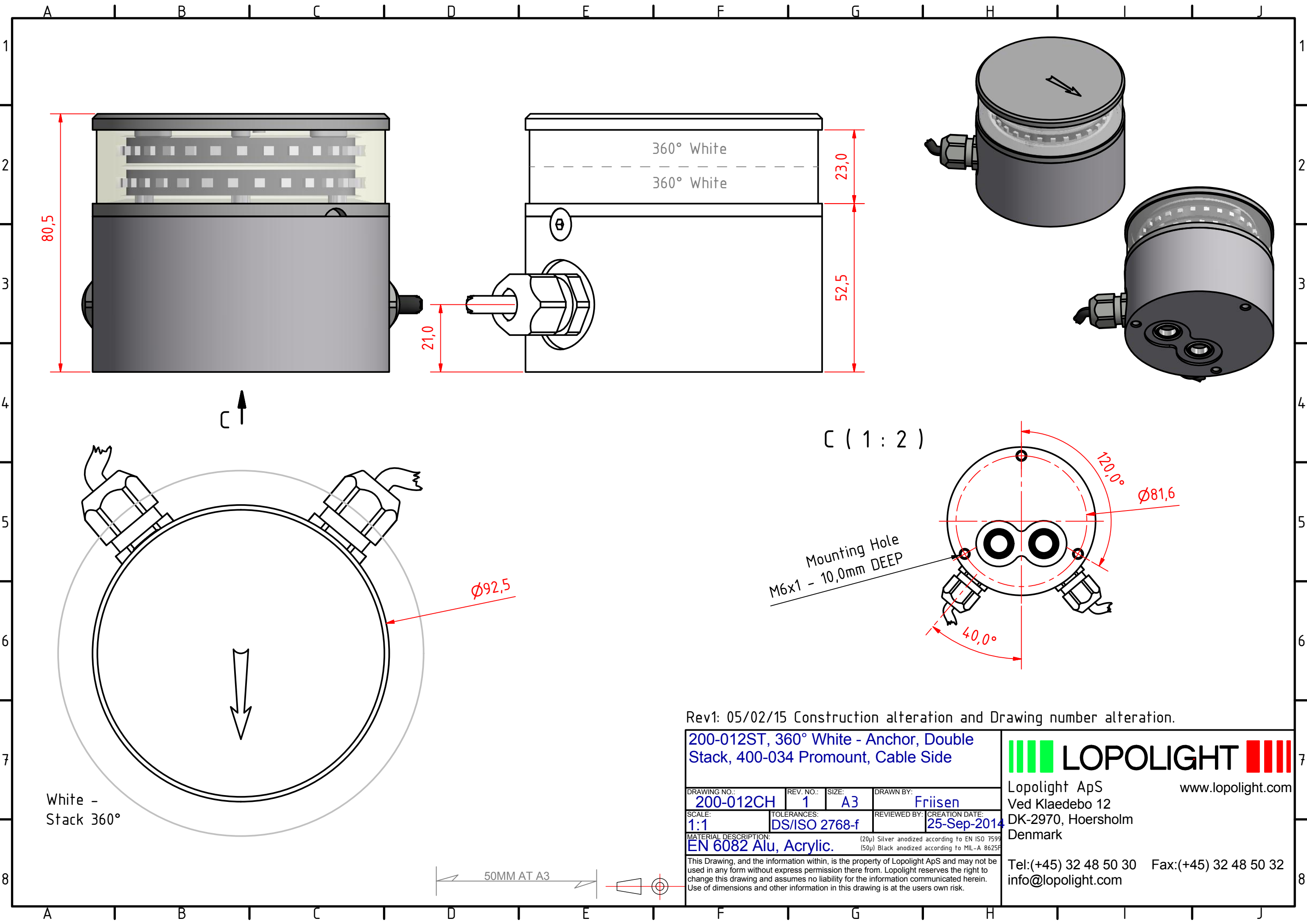
(20µ) Silver anodized according to EN ISO 7599
(50µ) Black anodized according to MIL-A 8625F
This Drawing, and the information within, is the property of Lopolight ApS and may not be used in any form without express permission there from. Lopolight reserves the right to change this drawing and assumes no liability for the information communicated herein. Use of dimensions and other information in this drawing is at the users own risk.

LOPOLIGHT

Lopolight ApS
Ved Klaedebo 12
DK-2970, Hoersholm
Denmark
www.lopolight.com

Tel:(+45) 32 48 50 30 Fax:(+45) 32 48 50 32
info@lopolight.com





Rev1: 05/02/15 Construction alteration and Drawing number alteration.

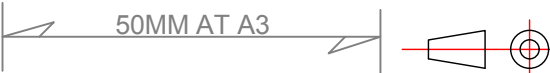
200-012ST, 360° White - Anchor, Double Stack, 400-034 Promount, Cable Side					
DRAWING NO.: 200-012CH		REV. NO.: 1	SIZE: A3	DRAWN BY: Friisen	
SCALE: 1:1		TOLERANCES: DS/ISO 2768-f		REVIEWED BY:	CREATION DATE: 25-Sep-2014
MATERIAL DESCRIPTION: EN 6082 Alu, Acrylic.				(20µ) Silver anodized according to EN ISO 7599 (50µ) Black anodized according to MIL-A 8625F	

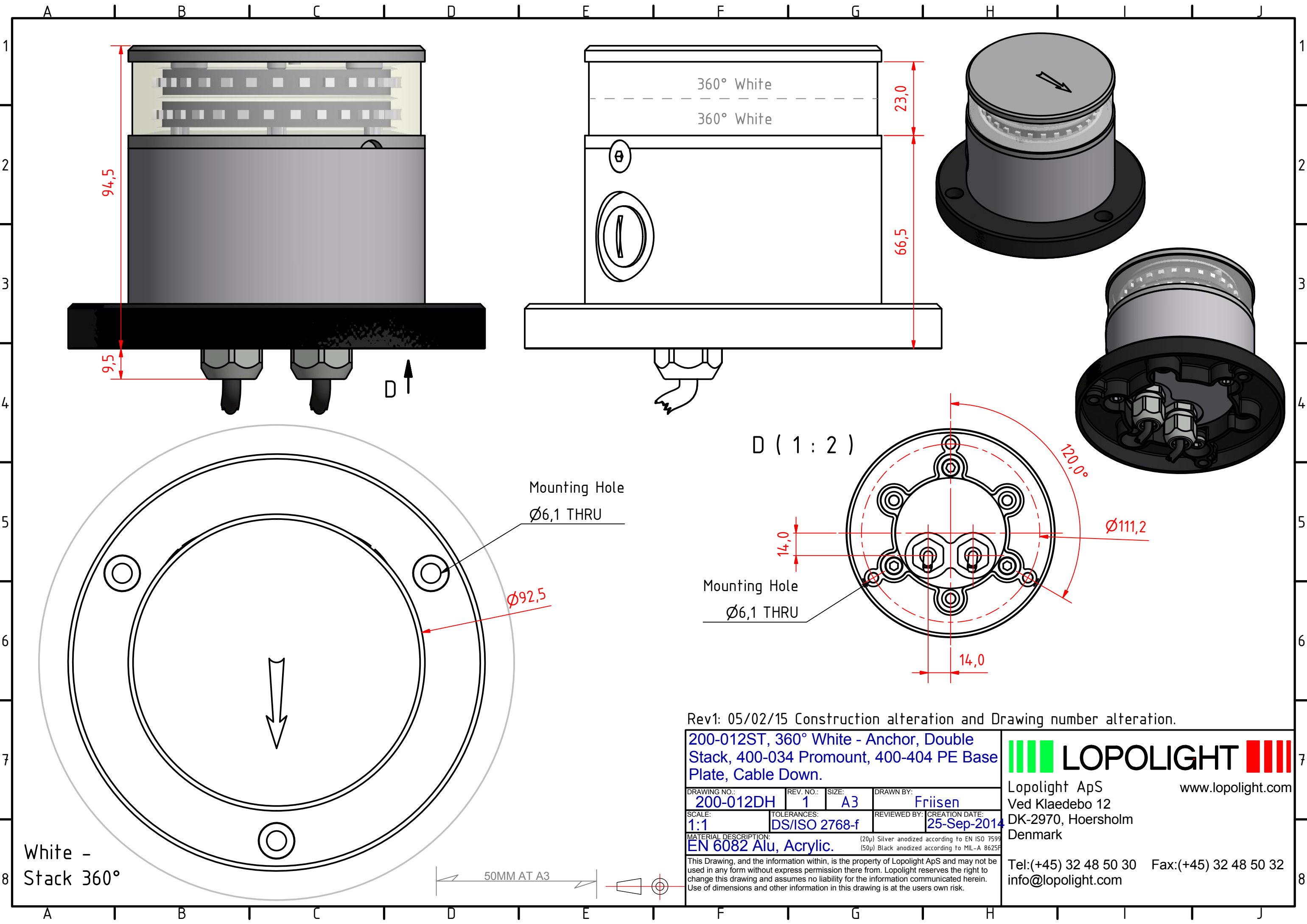
This Drawing, and the information within, is the property of Lopolight ApS and may not be used in any form without express permission there from. Lopolight reserves the right to change this drawing and assumes no liability for the information communicated herein. Use of dimensions and other information in this drawing is at the users own risk.



Lopolight ApS
Ved Klaedebo 12
DK-2970, Hoersholm
Denmark

Tel:(+45) 32 48 50 30 Fax:(+45) 32 48 50 32
info@lopolight.com





Rev1: 05/02/15 Construction alteration and Drawing number alteration.

200-012ST, 360° White - Anchor, Double Stack, 400-034 Promount, 400-404 PE Base Plate, Cable Down.			
DRAWING NO.: 200-012DH	REV. NO.: 1	SIZE: A3	DRAWN BY: Friisen
SCALE: 1:1	TOLERANCES: DS/ISO 2768-f	REVIEWED BY:	CREATION DATE: 25-Sep-2014
MATERIAL DESCRIPTION: EN 6082 Alu, Acrylic. (20µ) Silver anodized according to EN ISO 7599 (50µ) Black anodized according to MIL-A 8625F			

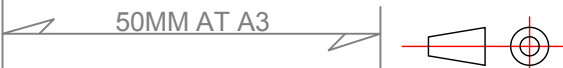
This Drawing, and the information within, is the property of Lopolight ApS and may not be used in any form without express permission there from. Lopolight reserves the right to change this drawing and assumes no liability for the information communicated herein. Use of dimensions and other information in this drawing is at the users own risk.

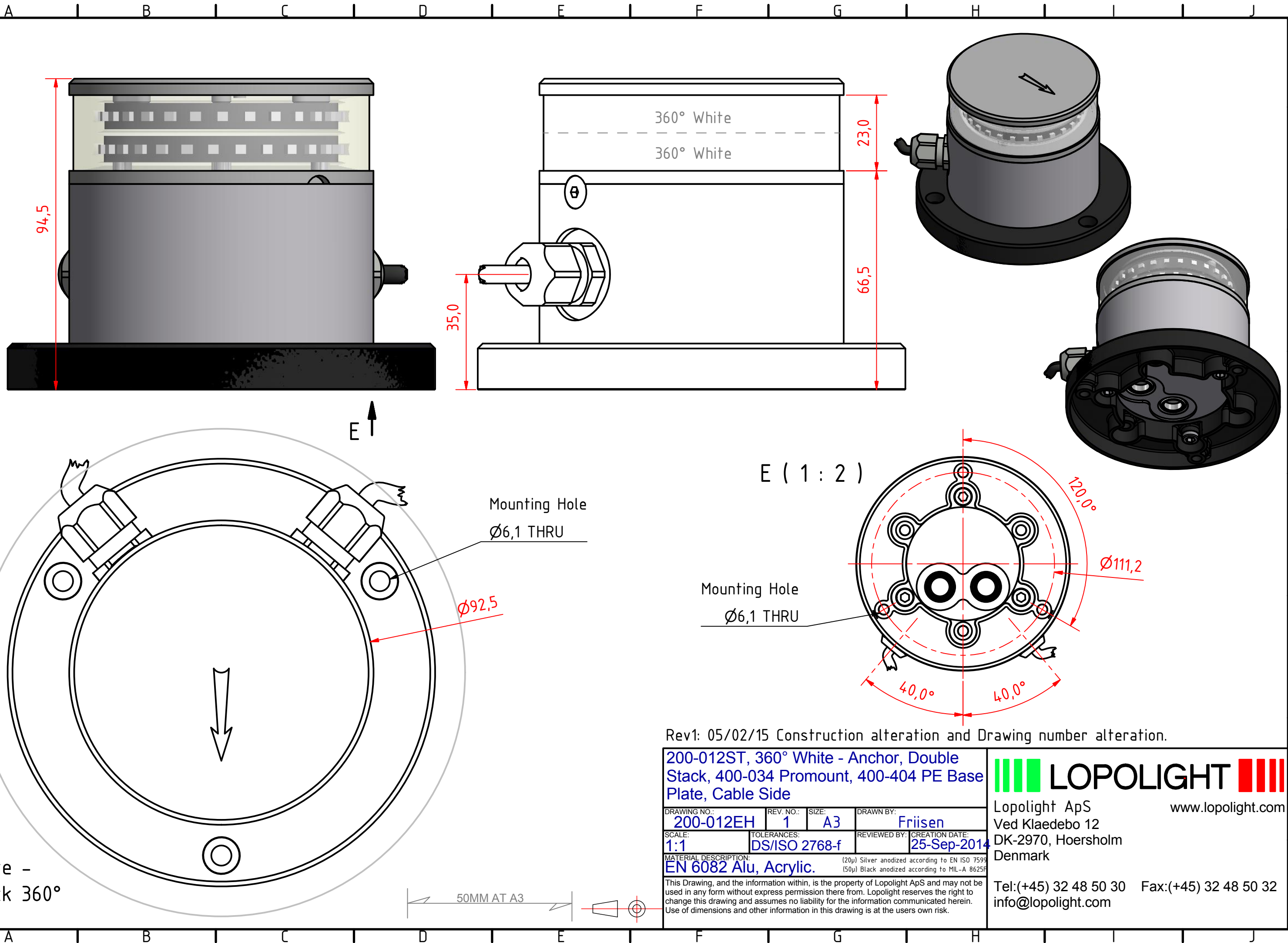
LOPOLIGHT

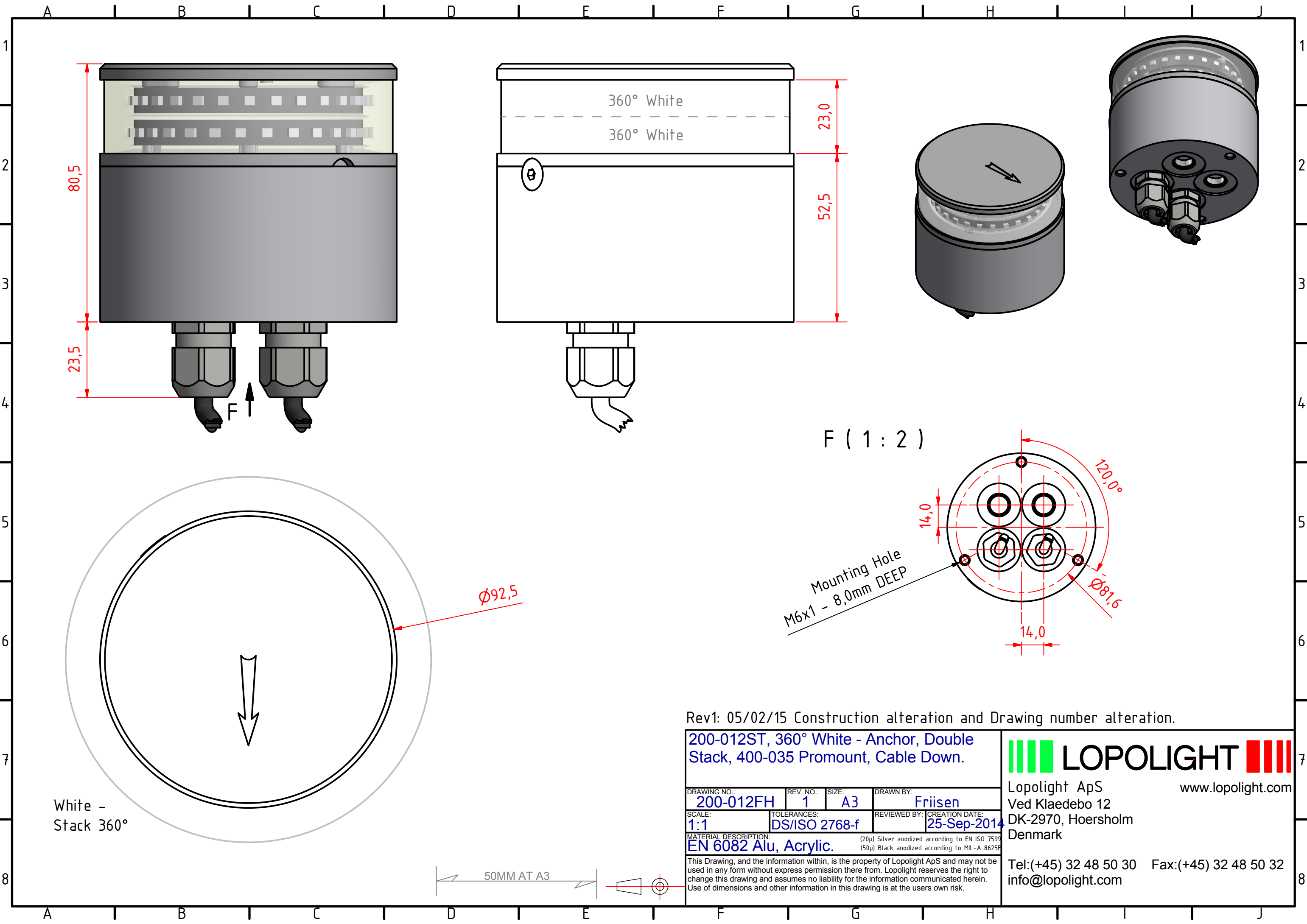
Lopolight ApS
Ved Klaedebo 12
DK-2970, Hoersholm
Denmark

www.lopolight.com

Tel:(+45) 32 48 50 30 Fax:(+45) 32 48 50 32
info@lopolight.com







Rev1: 05/02/15 Construction alteration and Drawing number alteration.

200-012ST, 360° White - Anchor, Double Stack, 400-035 Promount, Cable Down.

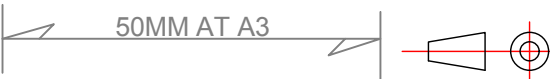
DRAWING NO.: 200-012FH	REV. NO.: 1	SIZE: A3	DRAWN BY: Friisen
SCALE: 1:1	TOLERANCES: DS/ISO 2768-f	REVIEWED BY:	CREATION DATE: 25-Sep-2014
MATERIAL DESCRIPTION: EN 6082 Alu, Acrylic.			

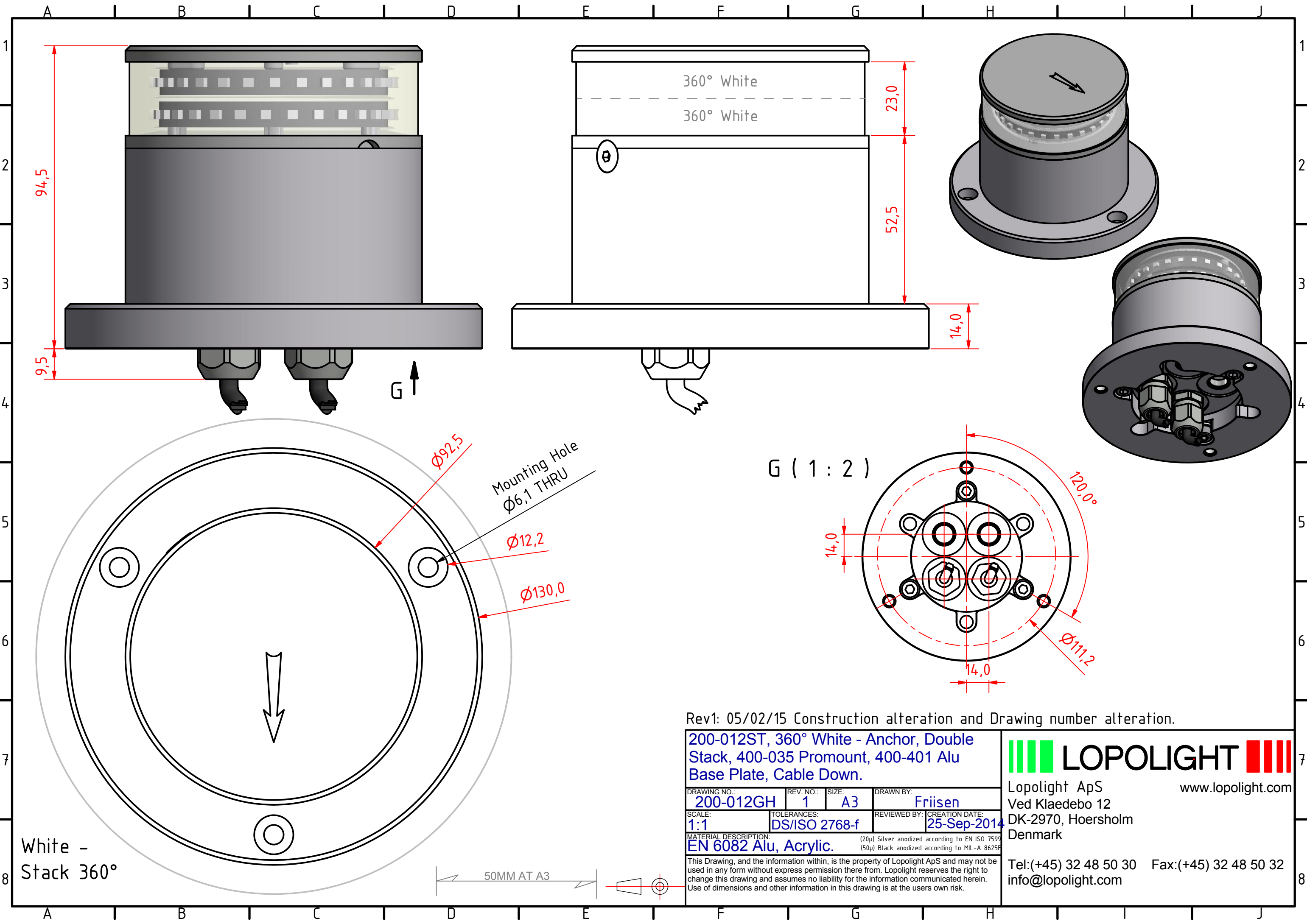
(20µ) Silver anodized according to EN ISO 7599
(50µ) Black anodized according to MIL-A 8625F
This Drawing, and the information within, is the property of Lopolight ApS and may not be used in any form without express permission there from. Lopolight reserves the right to change this drawing and assumes no liability for the information communicated herein. Use of dimensions and other information in this drawing is at the users own risk.

LOPOLIGHT

Lopolight ApS
Ved Klaedebo 12
DK-2970, Hoersholm
Denmark

Tel:(+45) 32 48 50 30 Fax:(+45) 32 48 50 32
info@lopolight.com





White -
Stack 360°

Rev1: 05/02/15 Construction alteration and Drawing number alteration.

200-012ST, 360° White - Anchor, Double Stack, 400-035 Promount, 400-401 Alu Base Plate, Cable Down.			
DRAWING NO.: 200-012GH	REV. NO.: 1	SIZE: A3	DRAWN BY: Friisen
SCALE: 1:1	TOLERANCES: DS/ISO 2768-f	REVIEWED BY:	CREATION DATE: 25-Sep-2014
MATERIAL DESCRIPTION: EN 6082 Alu, Acrylic. (20µ) Silver anodized according to EN ISO 7599 (50µ) Black anodized according to MIL-A 8625F			

This Drawing, and the information within, is the property of Lopolight ApS and may not be used in any form without express permission there from. Lopolight reserves the right to change this drawing and assumes no liability for the information communicated herein. Use of dimensions and other information in this drawing is at the users own risk.

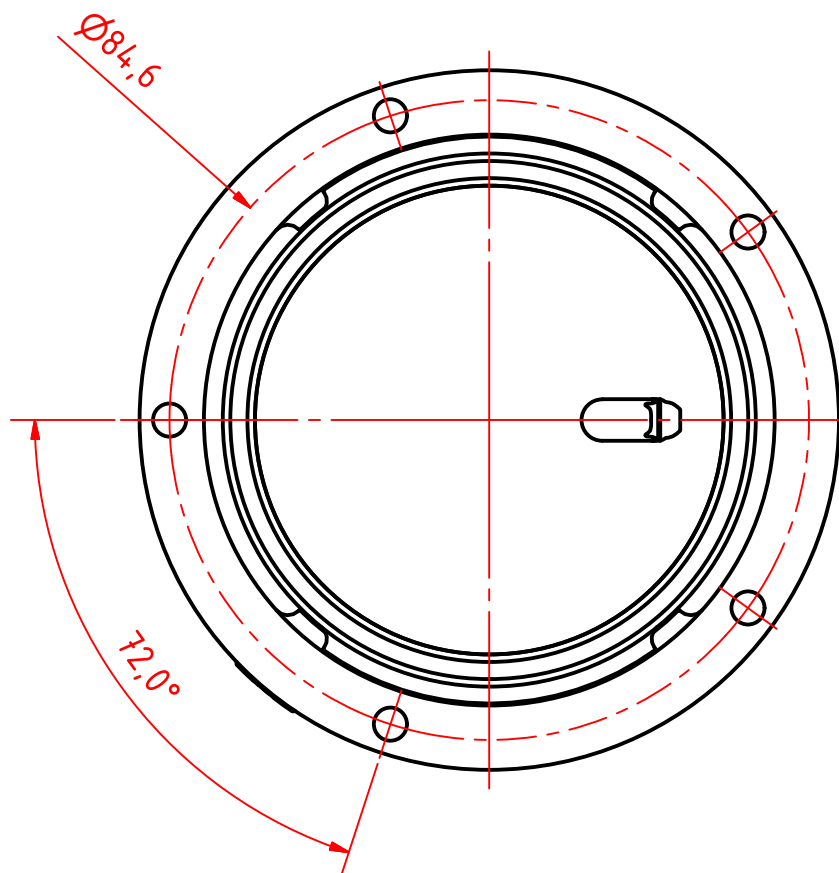
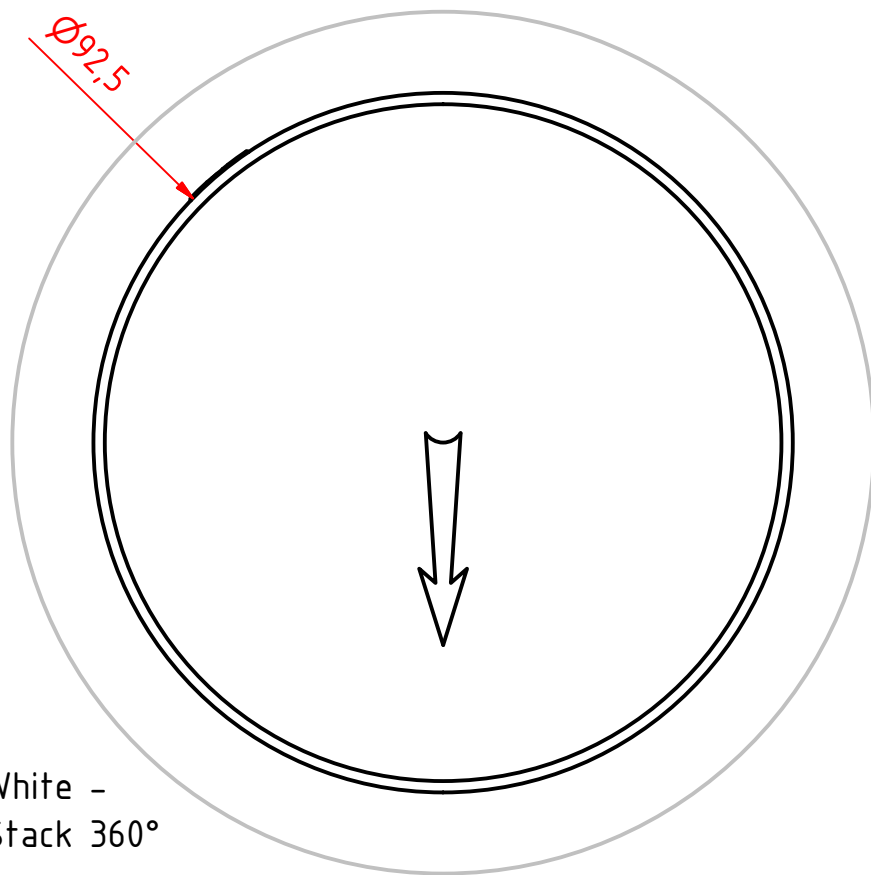
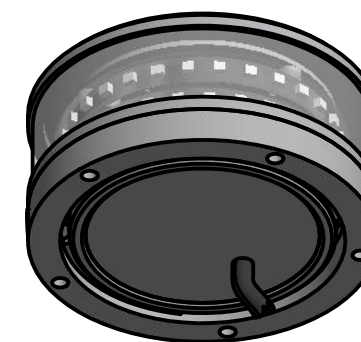
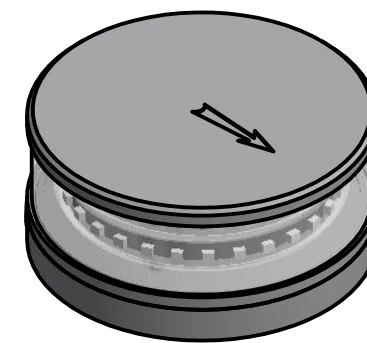
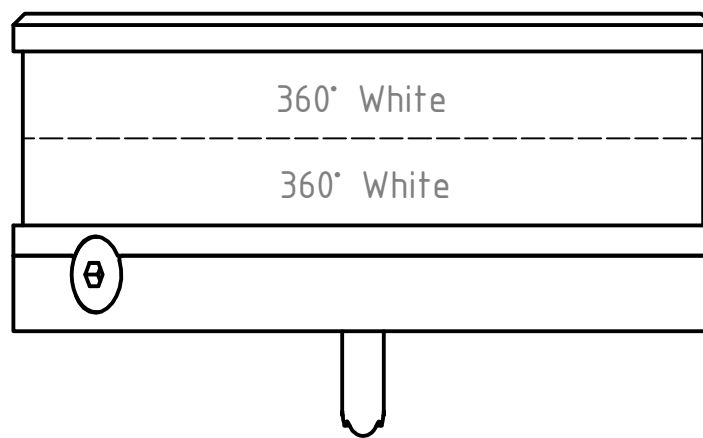
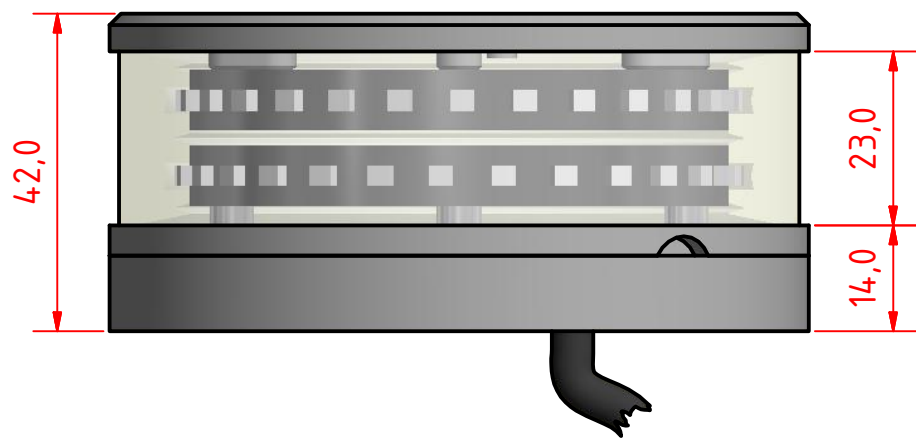
LOPOLIGHT

Lopolight ApS
Ved Klaedebo 12
DK-2970, Hoersholm
Denmark

www.lopolight.com

Tel:(+45) 32 48 50 30
info@lopolight.com

Fax:(+45) 32 48 50 32



White -
Stack 360°

200-012ST, 360° White - Anchor, Primary &
Secondary on a low profile base

DRAWING NO.:	REV. NO.:	SIZE:	DRAWN BY:
200-012HH	0	A3	Friisen
SCALE:	TOLERANCES:	REVIEWED BY:	CREATION DATE:
1:1	DS/ISO 2768-f		25-09-2014

MATERIAL DESCRIPTION:
Alu EN 6082, Acrylic, PE (20µ) Silver anodized according to EN ISO 7599
(50µ) Black anodized according to MIL-A 8625F

This Drawing, and the information within, is the property of Lopolight ApS and may not be used in any form without express permission there from. Lopolight reserves the right to change this drawing and assumes no liability for the information communicated herein. Use of dimensions and other information in this drawing is at the users own risk.

LOPOLIGHT

Lopolight ApS
Ved Klaedebo 12
DK-2970, Hoersholm
Denmark

www.lopolight.com

Tel:(+45) 32 48 50 30 Fax:(+45) 32 48 50 32
info@lopolight.com

50MM AT A3