



FISHING ROD HOLDER MOUNT PART# 15-150F

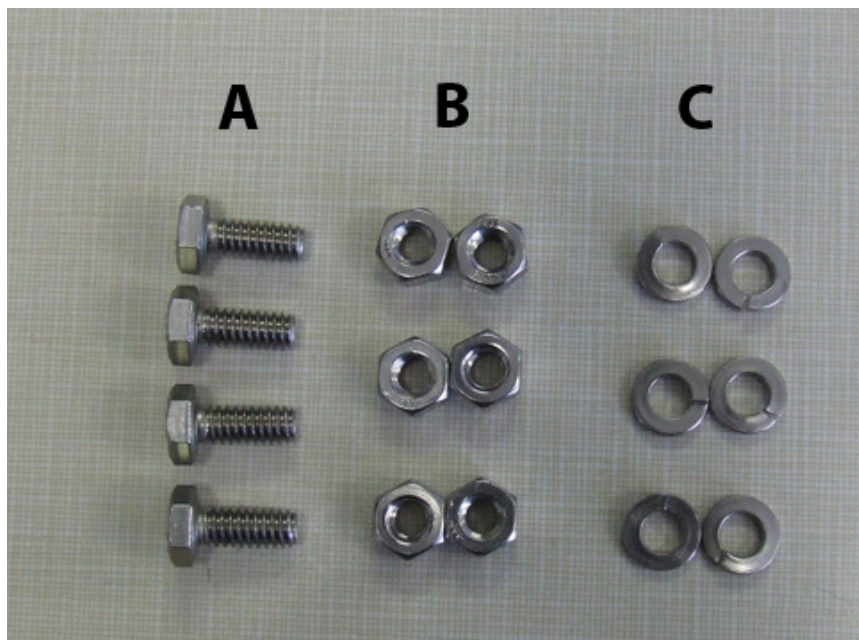
This mounting kit has been designed for use with your Dickinson BBQ. It will fit the following products:

- Sea-B-Que Small
- Sea-B-Que Round
- Sea-B-Que Large
- Spitfire 180 Grill

While this BBQ mount is a very strong and durable mount, it is not recommended to leave the Bar-B-Que attached to the mount whilst underway, especially in rough seas. Some rod holders in some installations may not be positioned to handle the weight of our larger grills. If this is the case, reposition your holder accordingly.

Included Parts

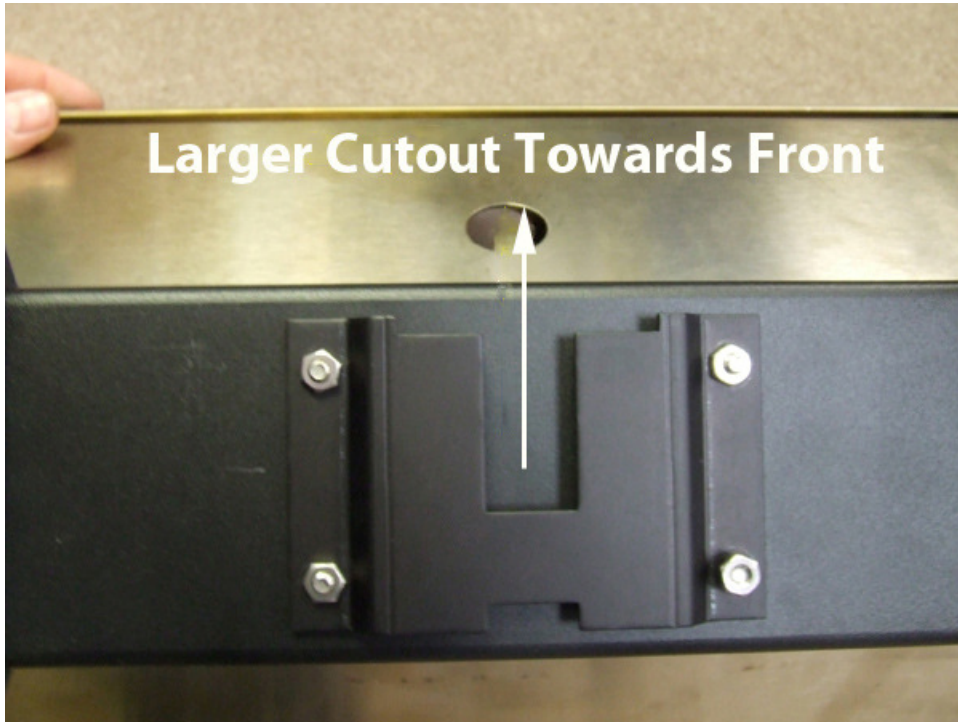
A – 1/4-20 x 5/8ths bolts	x 4
B – 1/4-20 Nuts	x 6
C – 1/4-20 Lockwashers	x 6



Instructions for Use

Attaching the H Bracket:

Remove the 10-32 nuts on the studs on the bottom of the drip tray holder then place the “H” bracket onto the studs in the position indicated below and then tighten the nuts onto the studs with a 3/8ths socket.



Assembling the Mount

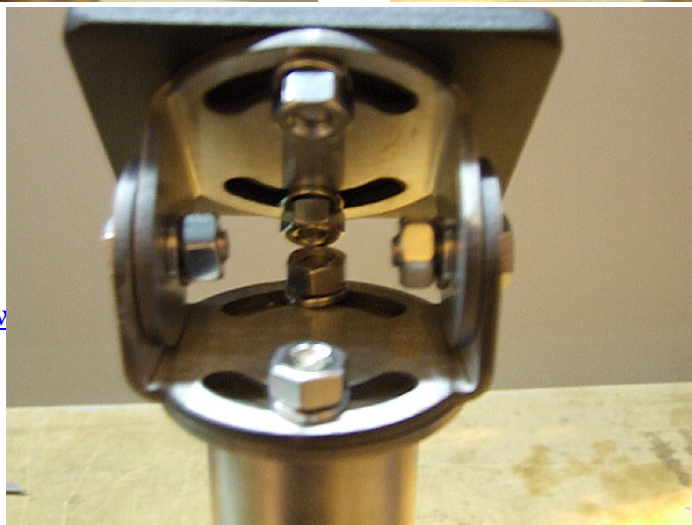
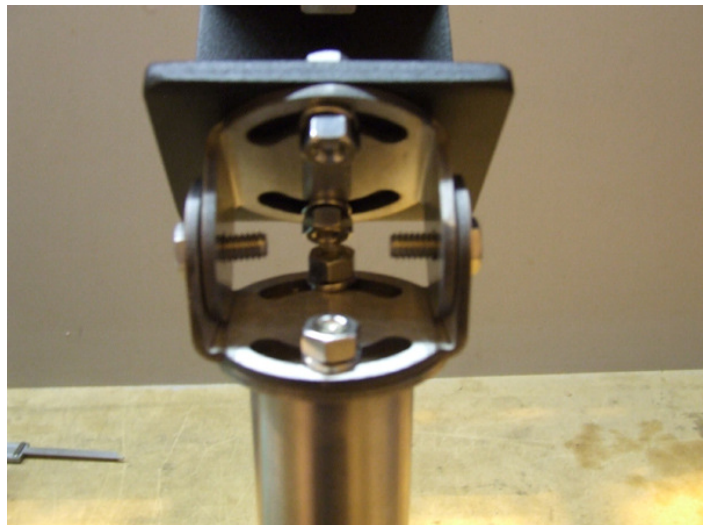
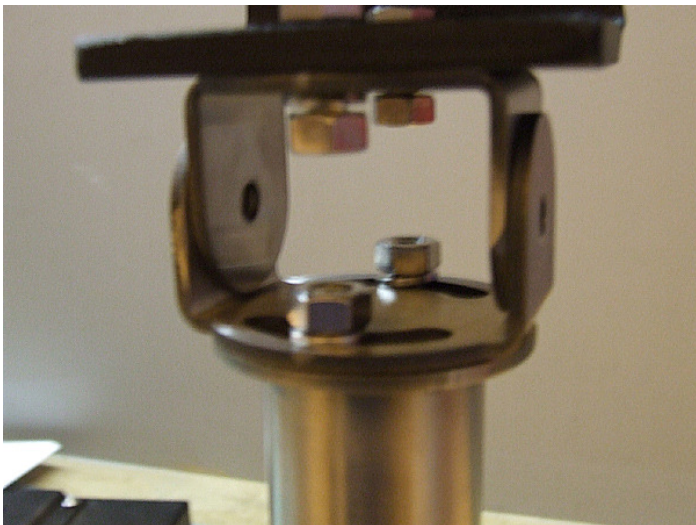
1. Place the larger mount bracket on the fishing rod mount bolts
2. Place the 1/4-20 lock washers and 1/4-20 nuts over top and tighten finger tight.



3. Place the small mount bracket under the BBQ bracket and secure by placing the 1/4-20 x 5/8ths bolts through the bracket and into the curved obrounds.
4. Place the 1/4-20 lock washers and 1/4-20 nuts over top and tighten finger tight.



5. Slide the 2 mount brackets into each other and place the 1/4-20 x 5/8ths bolts through the holes
6. Place the 1/4-20 lock washers and 1/4-20 nuts over top of the bolts and tighten finger tight.



[v](#)

[om](#)

Positioning the Mount:

Rotate the shaft into the rod holder until it falls in place. Pivot the universal joint until the top latch plate is horizontal and tighten the 2 side nuts.

Rotate the latch bracket on top of the universal joint until the latch faces outboard, and tighten 2 top nuts.

*****Caution: Do not place bbq on latch bracket until all 6 nuts are tight.**

CAUTION

LATCH CAN BE EASILY DAMAGED ON FIRST USE

When you are first installing your new Dickinson BBQ mount, DO NOT hook the end of the latch onto the end of the mount bracket. This can cause damage to the latch and invalidate your warranty.

